



AIR SOLUTIONS

QUALITY AIR MANAGEMENT PRODUCTS FROM A NAME YOU TRUST



AIR SPRINGS



AIR SPRING CONTROLS



COMPRESSORS



TANKS



FITTINGS



APPLICATION GUIDE & PRODUCT CATALOGUE

/// PACBRAKE[®] COMPANY



As a proud family run business since 1961, Pacbrake Company™ has been committed to providing its customers with the highest quality products for a wide range of vehicles. Over the years, the expertise and innovation of Pacbrake's dedicated staff transformed the company from an engine brake distributor, into an industry leading manufacturer of automotive products. To this day, Pacbrake remains devoted to improving its product design through continuous research and development in order to provide customers with the most advanced automotive systems available, setting the standard for performance and durability across the trucking industry.

Behind every Pacbrake product stands a team of qualified engineers, state of the art manufacturing facilities and an internationally recognized ISO 9001: 2008 quality management system.

Pacbrake's dedication to quality and service over the past 50 years has given them the experience to develop the number one air management system on the market. The AMP™ product line continues to exceed customer expectations.



HISTORY

1960-1980

- Pacbrake Company™ incorporates in 1961

1980-1990

- Pacbrake develops new engine brake technology for Detroit Diesel™, Caterpillar™ and Cummins™ engines
- Pacbrake becomes the first company to patent a combination engine brake that utilizes an exhaust valve

1990-2000

- Pacbrake starts supplying engine and exhaust brakes to Freightliner™, Kenworth™ and Detroit Diesel™
- Becomes the largest North American exhaust brake manufacturer

2000-2010

- Starts supplying valves to the US Military
- Pacbrake expands R&D efforts and starts development of aftermarket products
- Starts supplying thermal management valves to Navistar™
- Expands aftermarket product line to include more tow/haul solutions (air springs, in-cab controls and onboard air)

2010-PRESENT

- Pacbrake celebrates 50 years in business
- Supplies first hot EGR valve to Navistar™
- Develops the first engine brake for Cummins™ ISB engine
- Launches the first engine shutoff valve for the oil and gas industry
- Develops new AMP™ heavy duty air compressor line
- Pacbrake develops a large range of AMP™ air springs for various suspension applications
- Pacbrake designs new AMP™ wireless air spring controls app and airboard



The contents of this catalogue are subject to change without notice. Contact Pacbrake for the most up-to-date information on our products



AMP: Air Management By Pacbrake
AIR SUSPENSION & ONBOARD AIR

AMP AIR MANAGEMENT SYSTEM OVERVIEW

AIR SUSPENSION

The Benefits of Air Springs

Air Spring and Kit Features

Air Spring Application Guide

Chevrolet/GMC

Dodge/Ram

Ford

Freightliner

Mazda

Mercedes

Nissan

Sterling

Toyota

Universal Fit

Spacer Kits

AIR SPRING CONTROLS

Wireless Air Spring Controls

Wireless Air Spring Controls Kit

In-Cab Controls: Mechanical Gauge

Premium In-Cab Control Kits

Basic Electrical In-Cab Control Kits

Basic Paddle Valve In-Cab Control Kits

In-Cab Controls: Digital Gauge

Premium In-Cab Control Kits

Basic Electrical In-Cab Control Kits

ONBOARD AIR MANAGEMENT SYSTEMS

Onboard Air Features

Onboard Air Kits

HP325 Series Air Compressor Kits

HP625 Series Air Compressor Kits

Compressor Mounting Brackets

Air Tank: Kits & Accessories

COMPONENTS AND SPECIFICATIONS

Air Spring Specifications

Single Convoluted Air Spring

Double Convoluted Air Spring

Roll Plates

Spacer Kits

Hardware Specs

Sleeve Style Air Spring

In-Coil Air Spring

Air Spring Controls Specifications

In-Cab Control Gauge Assembly

Mechanical Air Gauges

Digital Air Gauges

Paddle Valve Switches

Electrical Switches

Brackets

Solenoid Specifications

3-Way, 2-Position

4-Way, 2-Position

3-Way, 2-Position

Onboard Air Specifications

HP325 Series Compressor

HP425 Series Compressor

HP625 Series Compressor

Steel Air Tanks (1/2, 2 1/2, 5 Gallon)

Aluminum Air Tanks (1/2, 2 1/2, 5 Gallon)

Pneumatic & Hydraulic Fittings

Push-to-Connect Fittings

Hose Barb Fittings

Pipe Fittings

SAE 45° Flare Fitting

Compression Fitting

JIC [SAE 37°] Flare Fitting

ISO 6149 Fittings

Check Valves & Quick Exhaust Valves

SAE 100R5 End Fittings

SAE 100R5 Medium Pressure Hydraulic Hose

Airline Tubing

FREQUENTLY ASKED QUESTIONS

MAINTENANCE TIPS

WARRANTY

1
2
2
3
5
5
6
8
10
10
10
10
10
10
10
11
12
12
13
15
15
16
16
17
17
18
19
19
20
20
21
21
22
24
24
24
24
25
25
25
26
26
27
27
29
29
30
30
30
31
31
32
32
33
33
35
37
39
40
42
42
42
43
43
44
44
44
44
45
45
45
46
47
48
49



AIR SUSPENSION



AIR SPRING CONTROLS



ONBOARD AIR



COMPONENTS

AMP AIR MANAGEMENT SYSTEM OVERVIEW

AMP offers a range of air management products. Our adjustable air springs can be used to custom-level your truck's stance, adding support from front-to-back & side-to-side. You can inflate them manually or add air spring controls which allow you to control your air springs with the touch of a button. If you require more air for your air springs (or other pneumatic accessories) you can add one of our onboard air kits which allows you to compress and store pressurized air.

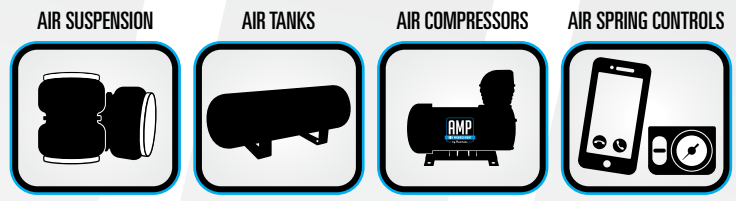
AIR SUSPENSION

AIR SPRING CONTROLS

ONBOARD AIR

COMPONENTS

WARRANTY



AIR MANAGEMENT 1: AIR SUSPENSION

AMP offers a variety of air spring solutions. Check our application guide to find the best system for your vehicle (see page 5). With the addition of an AMP air spring kit, you can inflate your air springs enough to support your vehicle's load without overtaxing its suspension, resulting in a level stance, comfortable ride and stable handling.

LIFETIME WARRANTY

EASY BOLT ON INSTALLATION

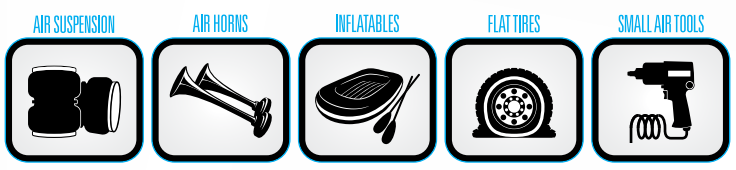
AIR MANAGEMENT 2: AIR SPRING CONTROLS

Operate your AMP air springs (or other pneumatic accessories) from your phone with the new AMP Wireless controls app, or the driver's seat with AMP in-cab controls. Various dash activation switch kits are available depending on your air spring and accessory requirements (see page 12).



AIR MANAGEMENT 3: ONBOARD AIR

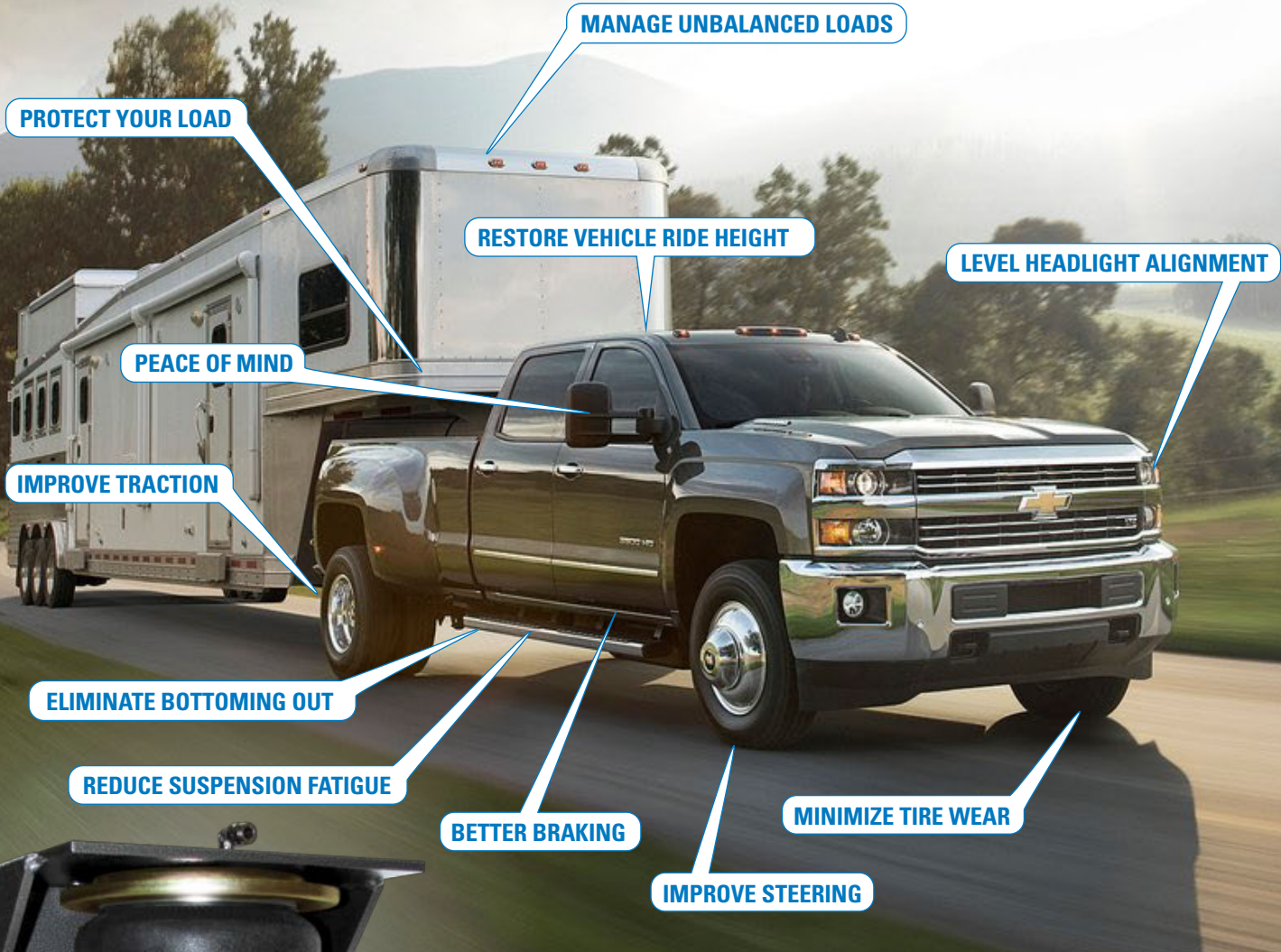
Onboard air (OBA) gives you the ability to compress and store pressurized air on your vehicle. Pacbrake offers air management components, pre-made OBA kits and customized OBA kits. All kits come complete with compressor(s), air tank, fittings, pressure switch, relay(s), electrical connectors and all applicable accessories (see page 19).





Adjustable AIR SPRINGS

ADDED SUPPORT FOR AN OVERALL SMOOTHER, SAFER RIDE



ADJUSTABLE AIR SPRING SOLUTIONS FOR COMMON TOW/HAUL PROBLEMS

Use the strongest air springs on the market to eliminate your vehicle's sag, sway and bottoming out. Level your truck's stance while providing added support for an overall smoother, safer ride.

AIR SUSPENSION

AIR SPRING CONTROLS

ONBOARD AIR

COMPONENTS

WARRANTY



www.pacbrake.com/AMP

800.663.0096



Adjustable AIR SPRINGS

ADDED SUPPORT FOR AN OVERALL SMOOTHER, SAFER RIDE

- >> STRONGEST AIR SPRINGS ON THE MARKET
- >> ELIMINATES VEHICLE SAG, SWAY & BOTTOMING OUT
- >> FRONT-TO-BACK & SIDE-TO-SIDE ADJUSTABILITY
- >> IDEAL FOR HEAVY HAULERS OR UNEVENLY DISTRIBUTED LOADS

AMP AIR SUSPENSION KITS HAVE NO EQUAL



EASY BOLT ON INSTALLATION

LIFETIME WARRANTY



AMP: THE #1 SOLUTION FOR YOUR TOW/HAUL PROBLEMS

Your truck's suspension was designed as a compromise between capacity and comfort. So when you haul heavy loads or pull a trailer, the rear springs can be pushed to their limit resulting in excessive bounce, sagging ride height, and an overall feeling of instability.

It doesn't have to be this way. With the simple addition of an AMP air suspension kit, you can eliminate overtaxing your suspension by providing the extra support of an inflated air spring, resulting in a level stance, comfortable ride and stable handling.



AIR SUSPENSION

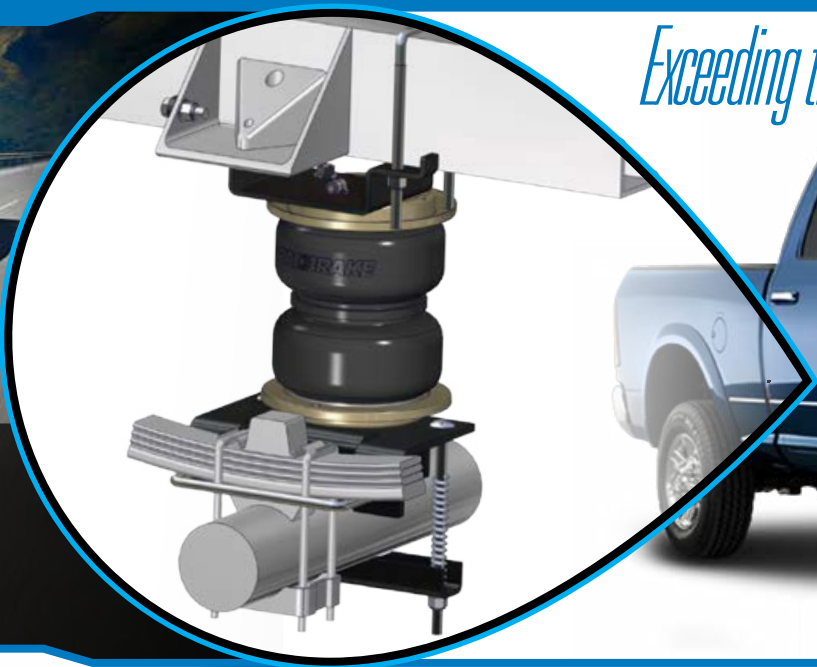
AIR SPRING CONTROLS

ONBOARD AIR

COMPONENTS

WARRANTY

Exceeding the competition in design and performance



AIR SUSPENSION

AIR SPRING CONTROLS

ONBOARD AIR

COMPONENTS

WARRANTY

HEAVY DUTY DESIGN & BUILD

ONE PIECE ALUMINUM ANODIZED END CAPS

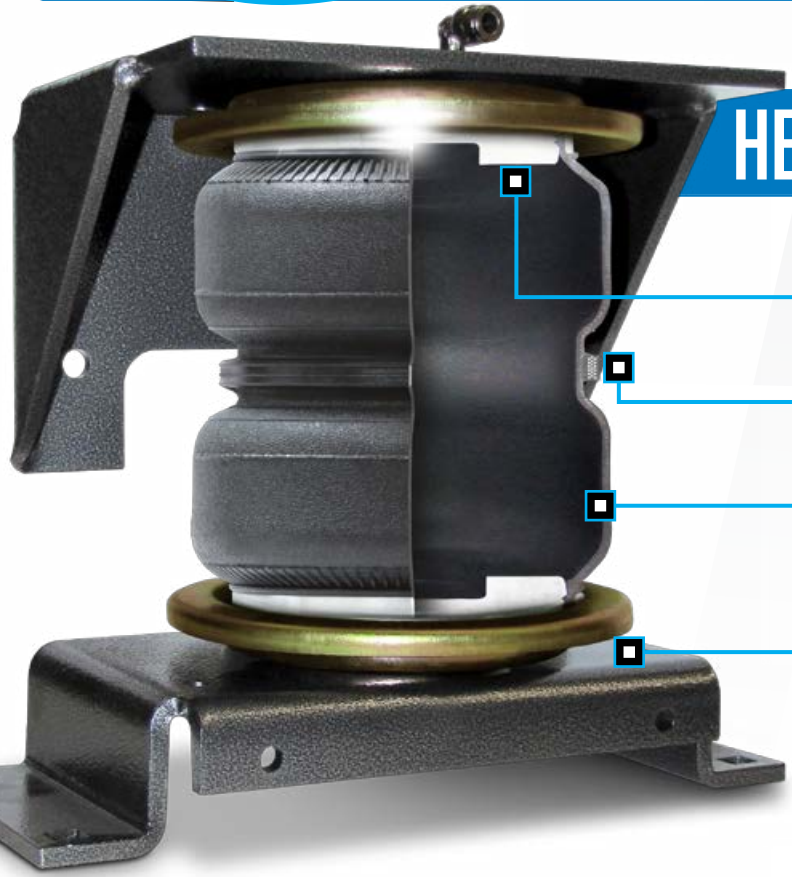
20 SUPPORT WIRES

TWO-PLY RUBBER

CORROSION RESISTANT ROLL PLATES & POWDER COATED BRACKETS

RATED UP TO 5,000 LBS*

*Applications vary. Kits containing HP10068 Rated to 5320 lbs. Never exceed manufacturer's recommended Gross Vehicle Weight Rating



DARE TO COMPARE...

AMP AIR SPRINGS HAVE NO EQUAL

Use the strongest air springs on the market to level your truck's stance while providing added support for an overall smoother, safer ride.

CHECK OUT THE COMPETITION...



1/8" Steel End Caps

Only 9 Support Wires



1/4" Plastic End Caps

Only 15 Support Wires



www.pacbrake.com/AMP

800.663.0096



Air Spring Application Guide

AIR SUSPENSION

MODEL	YEAR	KIT #		FRAME MOUNT			
CHEVROLET/GMC							

AIR SPRING CONTROLS

Chevrolet/GMC SUVs							
JIMMY/BLAZER (4WD)	1969-1991	HP10033 *	SS	Outside	Yes	2½ Hrs	HP10001
JIMMY/BLAZER (2WD)	1973-1991	HP10033 *	SS	Outside	Yes	2½ Hrs	HP10001
Chevrolet/GMC Pickup Trucks							
CHEVROLET COLORADO/GMC CANYON (2WD/4WD) ◆	2004-2012	HP10224 ◆	SS	Inside	No	2 Hrs	HP10001
CHEVROLET COLORADO/GMC CANYON (2WD/4WD) ◆	2009-2012	HP10226 ◆	SS	Inside	No	2 Hrs	HP10173

ONBOARD AIR

Chevrolet Silverado/GMC Sierra 1500							
C-10 (2WD)	1973-1987	HP10019 †	DC	Outside	Yes	3 Hrs	HP10000D
C-10 (2WD)	1973-1987	HP10033 *	SS	Outside	Yes	2½ Hrs	HP10001
K-10 (4WD)	1973-1987	HP10019 †	DC	Outside	Yes	3 Hrs	HP10000D
K-10 (4WD)	1973-1987	HP10033 *	SS	Outside	Yes	2½ Hrs	HP10001
SIERRA/SILVERADO K/C 1500 Δ (2WD/4WD)	1988-1998	HP10088 ***/Δ HP10120 ***/Δ	DC	Inside	Yes	3 Hrs	HP10000D HP10001
SIERRA/SILVERADO 1500HD (2WD/4WD) HEAVY LOADS	2001-2006	HP10072 ****	DC	Inside	No	2½ Hrs	HP10000D
SIERRA/SILVERADO 1500 (2WD/4WD)	1999-2007	HP10033 *	SS	Outside	Yes	2½ Hrs	HP10001
SILVERADO 1500HD (2WD/4WD)	2001-2005	HP10033 *	SS	Outside	Yes	2½ Hrs	HP10001
SIERRA 1500HD (2WD/4WD)	2001-2008	HP10033 *	SS	Outside	Yes	2½ Hrs	HP10001
SIERRA/SILVERADO 1500 (2WD/4WD) FOR SHORT (69.3") AND MEDIUM (78.7") TRUCK BED LENGTHS	2007-2018	HP10216	DC	Inside	Yes	3 Hrs	HP10000D
SIERRA/SILVERADO 1500 (2WD/4WD) FOR SHORT (69.3") AND MEDIUM (78.7") TRUCK BED LENGTHS	2007-2018	HP10144	SS	Outside	No	2 Hrs	HP10001
SIERRA/SILVERADO 1500 (2WD/4WD) FOR LONG (97.8") TRUCK BED LENGTHS	2007-2018	HP10178	SS	Outside	No	2 Hrs	HP10001

COMPONENTS

Chevrolet Silverado/GMC Sierra 2500							
C-20 (2WD)	1973-1987	HP10019 †	DC	Outside	Yes	3 Hrs	HP10000D
C-20 (2WD)	1973-1987	HP10033 *	SS	Outside	Yes	2½ Hrs	HP10001
K-20 (4WD)	1973-1987	HP10019 †	DC	Outside	Yes	3 Hrs	HP10000D
SIERRA/SILVERADO K/C 2500 Δ (2WD/4WD)	1988-1998	HP10088 ***/Δ HP10120 ***/Δ	DC	Inside	Yes	3 Hrs	HP10000D HP10001
SIERRA/SILVERADO 2500 Δ (2WD/4WD) (DRUM BRAKES ONLY)	1999-2000	HP10088 ***/Δ HP10120 ***/Δ	DC	Inside	Yes	3 Hrs	HP10000D HP10001

WARRANTY

	REPLACEMENT AIR SPRING		AIR SPRING STYLE	DC	DOUBLE CONVOLUTED	SS	SLEEVE STYLE
	VEHICLE MODIFICATION REQUIRED		SUGGESTED INSTALLATION TIME	SC	SINGLE CONVOLUTED	IC	IN-COIL

* THE HP10033 KIT REQUIRES 6" BETWEEN THE TIRE AND FRAME	† HP10019 KITS FIT WITH A REESE 5th WHEEL RAIL KIT (MODELS 30033, 30035 & 30729)
** WILL ONLY FIT WITH STOCK WHEELS AND TIRES	†† HP10070 KITS FIT WITH A DRAW TITE 15000 5th WHEEL HITCH
*** FOR 'C' CHANNEL FRAMES	††† FOR ALL TRUCKS, INCLUDING THOSE WITH 5th WHEEL HITCHES. NOT FOR CHASSIS CAB TRUCKS
**** FOR HYDRO FORMED FRAMES	‡ THE HP10002 KITS FIT WITH THE 3349 & 3319 SUPERGLIDE 5th WHEEL RAIL KITS ON 4WD VEHICLES
◆ SEE MANUAL (LINKED TO KIT#) OR CONTACT PACBRAKE FOR SPECIFIC SUB-MODEL APPLICATIONS	‡‡ THE HP10089 KITS WILL NOT FIT WITH THE 3349 & 3319 SUPERGLIDE 5th WHEEL RAIL KITS ON 2WD VEHICLES
Δ IF THE FRAME TO AXLE PAD DISTANCE IS 7.25" OR LESS, USE KIT HP10120	◆ DRILLING MAY BE REQUIRED ON TRUCKS WITH AN AFTERMARKET 5th WHEEL HITCH



Air Spring Application Guide

MODEL	YEAR	KIT #	S	FRAME MOUNT			
-------	------	-------	---	-------------	--	--	--

CHEVROLET/GMC

Chevrolet Silverado/GMC Sierra 2500 continued

SIERRA/SILVERADO 2500HD (2WD/4WD) <i>Not for commercial cab and chassis</i>	2001-2010	HP10005	DC	Inside	No	2 Hrs	HP10000D
SIERRA/SILVERADO 2500 (2WD/4WD) <i>Not for commercial cab and chassis</i>	2011-2018	HP10171 †††	DC	Inside	No ♦	2½ Hrs	HP10000D

Chevrolet Silverado/GMC Sierra 3500

C-30 (2WD)	1973-1987	HP10019 †	DC	Outside	Yes	3 Hrs	HP10000D
C-30 (2WD)	1973-1987	HP10033 *	SS	Outside	Yes	2½ Hrs	HP10001
K-30 (4WD)	1973-1987	HP10019 †	DC	Outside	Yes	3 Hrs	HP10000D
SIERRA/SILVERADO K/C 3500 Δ (2WD/4WD)	1988-2000	HP10088 ***/Δ HP10120 ***/Δ	DC	Inside	Yes	3 Hrs	HP10000D HP10001
SIERRA/SILVERADO 3500 (2WD/4WD) <i>Not for commercial cab and chassis</i>	2001-2010	HP10005	DC	Inside	No	2 Hrs	HP10000D
SIERRA/SILVERADO 3500 (2WD/4WD) <i>Not for commercial cab and chassis</i>	2011-2018	HP10171 †††	DC	Inside	No ♦	2½ Hrs	HP10000D

Chevrolet/GMC Motorhomes (Class C Vans)

CLASS C MOTORHOME G3500 (2WD) <i>Dual rear wheels</i>	2013-2015	HP10227	SC	Inside	No	2 Hrs	HP10083
CLASS C MOTORHOME G4500 (2WD) <i>Dual rear wheels</i>	2013-2015	HP10227	SC	Inside	No	2 Hrs	HP10083

DODGE/RAM

Dodge SUVs

RAM CHARGER (2WD/4WD)	1974-1993	HP10033 *	SS	Outside	Yes	2½ Hrs	HP10001
------------------------------	-----------	------------------	-----------	---------	-----	--------	---------

Dodge Pickup Trucks

DAKOTA (4WD)	1987-2004	HP10033 *	SS	Outside	Yes	2½ Hrs	HP10001
DAKOTA (2WD/4WD) ♦	2005-2011	HP10220 ♦	SS	Outside	Yes	2½ Hrs	HP10001
DAKOTA RT (2WD)	2000-2001	HP10033 *	SS	Outside	Yes	2½ Hrs	HP10001
W-100 (2WD/4WD)	1969-1993	HP10033 *	SS	Outside	Yes	2½ Hrs	HP10001
W-100 (2WD/4WD) HEAVY LOADS	1969-1993	HP10019 †	DC	Outside	Yes	3 Hrs	HP10000D
D-150, W-150 (2WD/4WD)	1969-1993	HP10033 *	SS	Outside	Yes	2½ Hrs	HP10001
D-150, W-150 (2WD/4WD) HEAVY LOADS	1969-1993	HP10019 †	DC	Outside	Yes	3 Hrs	HP10000D
D-250, W-250 (2WD/4WD)	1969-1993	HP10019 †	DC	Outside	Yes	3 Hrs	HP10000D
D-350, W-350 (2WD/4WD)	1969-1993	HP10019 †	DC	Outside	Yes	3 Hrs	HP10000D

REPLACEMENT AIR SPRING	AIR SPRING STYLE	DC DOUBLE CONVOLUTED	SS SLEEVE STYLE
VEHICLE MODIFICATION REQUIRED	SUGGESTED INSTALLATION TIME	SC SINGLE CONVOLUTED	IC IN-COIL

* THE HP10033 KIT REQUIRES 6" BETWEEN THE TIRE AND FRAME	† HP10019 KITS FIT WITH A REESE 5th WHEEL RAIL KIT (MODELS 30033, 30035 & 30729)
** WILL ONLY FIT WITH STOCK WHEELS AND TIRES	†† HP10070 KITS FIT WITH A DRAW TITE 15000 5th WHEEL HITCH
*** FOR 'C' CHANNEL FRAMES	††† FOR ALL TRUCKS, INCLUDING THOSE WITH 5th WHEEL HITCHES. NOT FOR CHASSIS CAB TRUCKS
**** FOR HYDRO FORMED FRAMES	‡ THE HP10002 KITS FIT WITH THE 3349 & 3319 SUPERGLIDE 5th WHEEL RAIL KITS ON 4WD VEHICLES
♦ SEE MANUAL (LINKED TO KIT#) OR CONTACT PACBRAKE FOR SPECIFIC SUB-MODEL APPLICATIONS	‡‡ THE HP10089 KITS WILL NOT FIT WITH THE 3349 & 3319 SUPERGLIDE 5th WHEEL RAIL KITS ON 2WD VEHICLES
Δ IF THE FRAME TO AXLE PAD DISTANCE IS 7.25" OR LESS, USE KIT HP10120	♦ DRILLING MAY BE REQUIRED ON TRUCKS WITH AN AFTERMARKET 5th WHEEL HITCH



Air Spring Application Guide

AIR SUSPENSION

AIR SPRING CONTROLS

ONBOARD AIR

COMPONENTS

WARRANTY

MODEL	YEAR	KIT #		FRAME MOUNT			
-------	------	-------	--	-------------	--	--	--

DODGE/RAM

Ram 1500							
RAM 1500 (2WD / 4WD)	1994-2001	HP10033 *	SS	Outside	Yes	2 ½ Hrs	HP10001
RAM 1500 (2WD) HEAVY LOADS	1994-2001	HP10019 †	DC	Outside	Yes	3 Hrs	HP10000D
RAM 1500 (2WD / 4WD) HEAVY LOADS	2002-2008	HP10071	DC	Inside	No	2 ½ Hrs	HP10000D
RAM MEGA CAB 1500 (4WD)	2006-2017	HP10002 ‡	DC	Inside	No	2 Hrs	HP10000D
RAM MEGA CAB 1500 (2WD)	2006-2008	HP10089 ††	SC	Inside	No	2 Hrs	HP10083
RAM 1500 (4WD) FOR 2WD CALL 800.663.0096 FOR ASSISTANCE	2009-2018	HP10207	DC	N/A	Yes	2 ½ Hrs	HP10000D
RAM 1500 (2WD / 4WD) INNER COIL AIR SPRING	2009-2016	HP10188	IC	N/A	No	2 Hrs	HP10189

Ram 2500							
RAM 2500 (2WD / 4WD)	1994-2002	HP10019 †	DC	Outside	Yes	3 Hrs	HP10000D
RAM 2500 (4WD)	2003-2013	HP10002 ‡	DC	Inside	No	2 Hrs	HP10000D
RAM 2500 (2WD)	2003-2013	HP10089 ††	SC	Inside	No	2 Hrs	HP10083
RAM MEGA CAB 2500 (4WD)	2006-2008	HP10002 ‡	DC	Inside	No	2 Hrs	HP10000D
RAM MEGA CAB 2500 (2WD)	2006-2008	HP10089 ††	SC	Inside	No	2 Hrs	HP10083
RAM 2500 (2WD / 4WD)	2014-2018	HP10206	DC	N/A	No	2 Hrs	HP10000D

Ram 3500							
RAM 3500 (2WD / 4WD)	1994-2002	HP10019 †	DC	Outside	Yes	3 Hrs	HP10000D
RAM 3500 (4WD)	2003-2018	HP10002 ‡	DC	Inside	No	2 Hrs	HP10000D
RAM 3500 (2WD)	2003-2018	HP10089 ††	SC	Inside	No	2 Hrs	HP10083
RAM MEGA CAB 3500 (4WD)	2006-2018	HP10002 ‡	DC	Inside	No	2 Hrs	HP10000D
RAM MEGA CAB 3500 (2WD)	2006-2008	HP10089 ††	SC	Inside	No	2 Hrs	HP10083
RAM 3500 (2WD / 4WD) CHASSIS CAB <small>The HP10136 must be purchased for vehicles that have a round axle tube with the breather located approximately 7" from the spring pack.</small>	2007-2018	HP10002 ‡ & HP10136	DC	Inside	No	2 Hrs	HP10000D

Dodge Vans/Commercial Vehicles							
RAM 4500 (2WD / 4WD) CHASSIS CAB	2007-2009	HP10121	DC	Inside	No	3 Hrs	HP10068
RAM 4500 (2WD / 4WD) CHASSIS CAB	2010-2018	HP10321	DC	Inside	No	2 Hrs	HP10068
RAM 5500 (2WD / 4WD) CHASSIS CAB	2007-2009	HP10121	DC	Inside	No	3 Hrs	HP10068
RAM 5500 (2WD / 4WD) CHASSIS CAB	2010-2018	HP10321	DC	Inside	No	2 Hrs	HP10068
SPRINTER 2500 (2WD)	2007-2009	HP10147	DC	Inside	Yes	2 ½ Hrs	HP10000D

	REPLACEMENT AIR SPRING		AIR SPRING STYLE	DC	DOUBLE CONVOLUTED	SS	SLEEVE STYLE
	VEHICLE MODIFICATION REQUIRED		SUGGESTED INSTALLATION TIME	SC	SINGLE CONVOLUTED	IC	IN-COIL

* THE HP10033 KIT REQUIRES 6" BETWEEN THE TIRE AND FRAME	† HP10019 KITS FIT WITH A REESE 5th WHEEL RAIL KIT (MODELS 30033, 30035 & 30729)
** WILL ONLY FIT WITH STOCK WHEELS AND TIRES	†† HP10070 KITS FIT WITH A DRAW TITE 15000 5th WHEEL HITCH
*** FOR 'C' CHANNEL FRAMES	††† FOR ALL TRUCKS, INCLUDING THOSE WITH 5th WHEEL HITCHES. NOT FOR CHASSIS CAB TRUCKS
**** FOR HYDRO FORMED FRAMES	‡ THE HP10002 KITS FIT WITH THE 3349 & 3319 SUPERGLIDE 5th WHEEL RAIL KITS ON 4WD VEHICLES
◆ SEE MANUAL (LINKED TO KIT#) OR CONTACT PACBRAKE FOR SPECIFIC SUB-MODEL APPLICATIONS	††† THE HP10089 KITS WILL NOT FIT WITH THE 3349 & 3319 SUPERGLIDE 5th WHEEL RAIL KITS ON 2WD VEHICLES
△ IF THE FRAME TO AXLE PAD DISTANCE IS 7.25" OR LESS, USE KIT HP10120	◆ DRILLING MAY BE REQUIRED ON TRUCKS WITH AN AFTERMARKET 5th WHEEL HITCH

Air Spring Application Guide



MODEL	YEAR	KIT #	S	FRAME MOUNT			
-------	------	-------	---	-------------	--	--	--

FORD

Ford SUVs

BRONCO (4WD)	1980-1996	HP10033 *	SS	Outside	Yes	2½ Hrs	HP10001
BRONCO II (4WD)	1983-1990	HP10033 *	SS	Outside	Yes	2½ Hrs	HP10001

Ford Pickup Trucks

RANGER ** (2WD/4WD)	1998-2010	HP10019 †	DC	Outside	Yes	3 Hrs	HP10000D
F-100 (4WD) HEAVY LOADS	1966-1996	HP10019 †	DC	Outside	Yes	3 Hrs	HP10000D
F-100 (4WD) LIGHT LOADS	1966-1996	HP10033 *	SS	Outside	Yes	2½ Hrs	HP10001
F-100 (2WD) HEAVY LOADS	1968-1996	HP10019 †	DC	Outside	Yes	3 Hrs	HP10000D
F-100 (2WD) LIGHT LOADS	1968-1996	HP10033 *	SS	Outside	Yes	2½ Hrs	HP10001

Ford F-150

F-150 (4WD) HEAVY LOADS	1966-1996	HP10019 †	DC	Outside	Yes	3 Hrs	HP10000D
F-150 (2WD) HEAVY LOADS	1968-1996	HP10019 †	DC	Outside	Yes	3 Hrs	HP10000D
F-150 (2WD) LIGHT LOADS	1968-1996	HP10033 *	SS	Outside	Yes	2½ Hrs	HP10001
F-150 (2WD/4WD) INCLUDING HERITAGE	1997-2003	HP10033 *	SS	Outside	Yes	2½ Hrs	HP10001
F-150 (2WD/4WD) HEAVY LOADS <i>Will not fit fx2</i>	2004-2008	HP10004	DC	Outside	No	2 Hrs	HP10000D
F-150 (2WD/4WD) EXCLUDES HERITAGE	2004-2009	HP10153	SS	Outside	No	2½ Hrs	HP10173
F-150 (2WD/4WD) EXCLUDES HERITAGE & F-150 RAPTOR <i>Will not fit newer style, aluminum body trucks</i>	2010-2014	HP10155	SS	Outside	No	2½ Hrs	HP10001
F-150 (4WD)	2004-2014	HP10212	DC	Inside	No	2½ Hrs	HP10000D
F-150 (4WD)	2015-2018	HP10215	SC	Inside	No	2½ Hrs	HP10083
TRANSIT 150 (2WD)	2015-2018	HP10307	DC	Inside	No	2½ Hrs	HP10000D

Ford F-250

F-250 (2WD) UNDER 7500 GVWR	1969-1979	HP10019 †	DC	Outside	Yes	3 Hrs	HP10000D
F-250 (2WD)	1980-1996	HP10019 †	DC	Outside	Yes	3 Hrs	HP10000D
F-250 (4WD) '97 HEAVY DUTY OVER 8600 GVWR	1980-1997	HP10019 †	DC	Outside	Yes	3 Hrs	HP10000D
F-250 LIGHT DUTY (2WD/4WD) UNDER 7500 GVWR	1997-1998	HP10019 †	DC	Outside	Yes	3 Hrs	HP10000D
F-250 SUPER DUTY (2WD/4WD)	1999-2010	HP10070 ††	DC	Outside	Yes	3 Hrs	HP10000D
F-250 SUPER DUTY (2WD)	2005-2010	HP10182 †††	DC	Inside	No ♦	4 Hrs	HP10000D
F-250 SUPER DUTY (4WD)	2005-2010	HP10181 †††	DC	Inside	No ♦	4 Hrs	HP10000D

	REPLACEMENT AIR SPRING		AIR SPRING STYLE	DC	DOUBLE CONVOLUTED	SS	SLEEVE STYLE
	VEHICLE MODIFICATION REQUIRED		SUGGESTED INSTALLATION TIME	SC	SINGLE CONVOLUTED	IC	IN-COIL

* THE HP10033 KIT REQUIRES 6" BETWEEN THE TIRE AND FRAME	† HP10019 KITS FIT WITH A REESE 5th WHEEL RAIL KIT (MODELS 30033, 30035 & 30729)
** WILL ONLY FIT WITH STOCK WHEELS AND TIRES	†† HP10070 KITS FIT WITH A DRAW TITE 15000 5th WHEEL HITCH
*** FOR 'C' CHANNEL FRAMES	††† FOR ALL TRUCKS, INCLUDING THOSE WITH 5th WHEEL HITCHES. NOT FOR CHASSIS CAB TRUCKS
**** FOR HYDRO FORMED FRAMES	‡ THE HP10002 KITS FIT WITH THE 3349 & 3319 SUPERGLIDE 5th WHEEL RAIL KITS ON 4WD VEHICLES
◆ SEE MANUAL (LINKED TO KIT#) OR CONTACT PACBRAKE FOR SPECIFIC SUB-MODEL APPLICATIONS	‡‡ THE HP10089 KITS WILL NOT FIT WITH THE 3349 & 3319 SUPERGLIDE 5th WHEEL RAIL KITS ON 2WD VEHICLES
△ IF THE FRAME TO AXLE PAD DISTANCE IS 7.25" OR LESS, USE KIT HP10120	◆ DRILLING MAY BE REQUIRED ON TRUCKS WITH AN AFTERMARKET 5th WHEEL HITCH



Air Spring Application Guide

AIR SUSPENSION

MODEL	YEAR	KIT #		FRAME MOUNT			
FORD							

AIR SPRING CONTROLS

Ford F-250 Continued

F-250 SUPER DUTY (2WD/4WD) <i>Will not fit vehicles with factory installed 5th wheel hitch</i>	2010-2016	HP10070 ††	DC	Outside	Yes	3 Hrs	HP10000D
F-250 SUPER DUTY (2WD)	2011-2016	HP10194 †††	DC	Inside	No ♦	4 Hrs	HP10000D
F-250 SUPER DUTY (4WD)	2011-2016	HP10247 †††	DC	Inside	No ♦	2 Hrs	HP10068
F-250 SUPER DUTY (4WD)	2017-2018	HP10304 †††	DC	Inside	Yes	2½ Hrs	HP10000D
TRANSIT 250 (2WD)	2015-2018	HP10307	DC	Inside	No	2½ Hrs	HP10000D

ONBOARD AIR

Ford F-350

F-350 (2WD)	1970-1997	HP10019 †	DC	Outside	Yes	3 Hrs	HP10000D
F-350 (4WD) EXCEPT SUPER HD CHASSIS	1980-1997	HP10019 †	DC	Outside	Yes	3 Hrs	HP10000D
F-350 SUPER DUTY (2WD) 11,200 GVWR & UNDER	1999-2004	HP10019 †	DC	Outside	Yes	3 Hrs	HP10000D
F-350 SUPER DUTY (2WD/4WD)	1999-2010	HP10070 ††	DC	Outside	Yes	3 Hrs	HP10000D
F-350 SUPER DUTY (2WD)	2005-2010	HP10182 †††	DC	Inside	No ♦	4 Hrs	HP10000D
F-350 SUPER DUTY (4WD)	2005-2010	HP10181 †††	DC	Inside	No ♦	4 Hrs	HP10000D
F-350 SUPER DUTY (2WD/4WD) <i>Will not fit vehicles with factory installed 5th wheel hitch</i>	2010-2016	HP10070 ††	DC	Outside	Yes	3 Hrs	HP10000D
F-350 SUPER DUTY (2WD)	2011-2016	HP10194 †††	DC	Inside	No ♦	4 Hrs	HP10000D
F-350 SUPER DUTY (4WD)	2011-2016	HP10247 †††	DC	Inside	No ♦	2 Hrs	HP10068
F-350 SUPER DUTY (4WD)	2017-2018	HP10304 †††	DC	Inside	Yes	2½ Hrs	HP10000D
TRANSIT 350 (2WD)	2015-2018	HP10307	DC	Inside	No	2½ Hrs	HP10000D

COMPONENTS

Ford F-450

F-450 SUPER DUTY (2WD)	2011-2014	HP10194 †††	DC	Inside	No ♦	4 Hrs	HP10000D
F-450 SUPER DUTY (4WD)	2011-2014	HP10193 †††	DC	Inside	No ♦	4 Hrs	HP10000D
F-450 SUPER DUTY (2WD/4WD)	2008-2010	HP10187 †††	DC	Inside	No	4 Hrs	HP10000D
F-450 SUPER DUTY (2WD/4WD)	2015-2016	HP10195 †††	DC	Inside	No	3 Hrs	HP10000D
F-450 SUPER DUTY (4WD)	2017	HP10304 †††	DC	Inside	Yes	2½ Hrs	HP10000D
F-450 SUPER DUTY (2WD/4WD) COMMERCIAL CAB & CHASSIS	2012-2018	HP10324	DC	Outside	Yes	3 Hrs	HP10068

WARRANTY

Ford F-550

F-550 SUPER DUTY (2WD/4WD) COMMERCIAL CAB & CHASSIS	2012-2018	HP10324	DC	Outside	Yes	3 Hrs	HP10068
---	-----------	----------------	-----------	---------	-----	-------	---------

	REPLACEMENT AIR SPRING		AIR SPRING STYLE	DC	DOUBLE CONVOLUTED	SS	SLEEVE STYLE
	VEHICLE MODIFICATION REQUIRED		SUGGESTED INSTALLATION TIME	SC	SINGLE CONVOLUTED	IC	IN-COIL

* THE HP10033 KIT REQUIRES 6" BETWEEN THE TIRE AND FRAME	† HP10019 KITS FIT WITH A REESE 5th WHEEL RAIL KIT (MODELS 30033, 30035 & 30729)
** WILL ONLY FIT WITH STOCK WHEELS AND TIRES	†† HP10070 KITS FIT WITH A DRAW TITE 15000 5th WHEEL HITCH
*** FOR 'C' CHANNEL FRAMES	††† FOR ALL TRUCKS, INCLUDING THOSE WITH 5th WHEEL HITCHES. NOT FOR CHASSIS CAB TRUCKS
**** FOR HYDRO FORMED FRAMES	‡ THE HP10002 KITS FIT WITH THE 3349 & 3319 SUPERGLIDE 5th WHEEL RAIL KITS ON 4WD VEHICLES
◆ SEE MANUAL (LINKED TO KIT#) OR CONTACT PACBRAKE FOR SPECIFIC SUB-MODEL APPLICATIONS	‡‡ THE HP10089 KITS WILL NOT FIT WITH THE 3349 & 3319 SUPERGLIDE 5th WHEEL RAIL KITS ON 2WD VEHICLES
△ IF THE FRAME TO AXLE PAD DISTANCE IS 7.25" OR LESS, USE KIT HP10120	◆ DRILLING MAY BE REQUIRED ON TRUCKS WITH AN AFTERMARKET 5th WHEEL HITCH



Air Spring Application Guide

MODEL	YEAR	KIT #	S	FRAME MOUNT			
FREIGHTLINER							
SPRINTER, 2500 (2WD)	2007-2014	HP10147	DC	Inside	Yes	3 Hrs	HP10000D
MAZDA							
MAZDA PICK-UPS (2WD / 4WD) <small>Will only fit with stock wheels and tires</small>	1998-2010	HP10019 †	DC	Outside	Yes	3 Hrs	HP10000D
MERCEDES							
SPRINTER, 2500 (2WD)	2010-2014	HP10147	DC	Inside	Yes	3 Hrs	HP10000D
NISSAN							
TITAN (2WD / 4WD)	2004-2015	HP10222	DC	Inside	Yes	2 Hrs	HP10000D
STERLING							
BULLET 4500, BULLET 5500 (2WD / 4WD) CHASSIS CAB	2007-2009	HP10121	DC	Inside	No	3 Hrs	HP10068
TOYOTA							
Toyota Tacoma ALL TOYOTA KITS REQUIRE A MINIMUM OF 5" BETWEEN THE TIRE AND FRAME AND WILL ONLY FIT WITH STOCK WHEELS AND TIRES 1995-2004. THIS DOES NOT APPLY TO HP10311.							
TOYOTA TACOMA (4WD)	1995-2004	HP10191	SS	Outside	Yes	3 Hrs	HP10173
TOYOTA TACOMA (4WD)	2005-2014	HP10165	SS	Outside	No	3 Hrs	HP10199
TOYOTA TACOMA (4WD)	2005-2017	HP10311	SC	Inside	No	2½ Hrs	HP10083
TOYOTA TACOMA PRERUNNER (2WD)	2005-2017	HP10311	SC	Inside	No	2½ Hrs	HP10083
Toyota Tundra ALL TOYOTA KITS REQUIRE A MINIMUM OF 5" BETWEEN THE TIRE AND FRAME AND WILL ONLY FIT WITH STOCK WHEELS AND TIRES 1995-2004							
TOYOTA TUNDRA (2WD / 4WD)	2001-2006	HP10126	SC	Outside	No	2½ Hrs	HP10083
TOYOTA TUNDRA (2WD / 4WD) <small>Trucks in which the upper jounce bumper pad protrudes 1" below the frame</small>	2001-2006	HP10158	SC	Outside	No	2½ Hrs	HP10083
TOYOTA TUNDRA (2WD / 4WD)	2007-2018	HP10128	SC	Outside	No	2½ Hrs	HP10083
UNIVERSAL FIT							
FABRICATORS REAR AIR SPRING KIT (SMALL AIR SPRINGS)	N/A	HP10130	DC	N/A	N/A	N/A	HP10000D
FABRICATORS FRONT AIR SPRING KIT (LARGE AIR SPRINGS)	N/A	HP10086	DC	N/A	N/A	N/A	HP10068

	REPLACEMENT AIR SPRING		AIR SPRING STYLE	DC	DOUBLE CONVOLUTED	SS	SLEEVE STYLE
	VEHICLE MODIFICATION REQUIRED		SUGGESTED INSTALLATION TIME	SC	SINGLE CONVOLUTED	IC	IN-COIL

* THE HP10033 KIT REQUIRES 6" BETWEEN THE TIRE AND FRAME	† HP10019 KITS FIT WITH A REESE 5th WHEEL RAIL KIT (MODELS 30033, 30035 & 30729)
** WILL ONLY FIT WITH STOCK WHEELS AND TIRES	†† HP10070 KITS FIT WITH A DRAW TITE 15000 5th WHEEL HITCH
*** FOR 'C' CHANNEL FRAMES	††† FOR ALL TRUCKS, INCLUDING THOSE WITH 5th WHEEL HITCHES. NOT FOR CHASSIS CAB TRUCKS
**** FOR HYDRO FORMED FRAMES	‡ THE HP10002 KITS FIT WITH THE 3349 & 3319 SUPERGLIDE 5th WHEEL RAIL KITS ON 4WD VEHICLES
◆ SEE MANUAL (LINKED TO KIT#) OR CONTACT PACBRAKE FOR SPECIFIC SUB-MODEL APPLICATIONS	‡‡ THE HP10089 KITS WILL NOT FIT WITH THE 3349 & 3319 SUPERGLIDE 5th WHEEL RAIL KITS ON 2WD VEHICLES
△ IF THE FRAME TO AXLE PAD DISTANCE IS 7.25" OR LESS, USE KIT HP10120	◆ DRILLING MAY BE REQUIRED ON TRUCKS WITH AN AFTERMARKET 5th WHEEL HITCH



PACBRAKE

INDUSTRIAL QUALITY MANAGEMENT SYSTEM
ISO 9001:2008



AMP AIR SPRING SPACERS FOR LIFTED TRUCKS

Pacbrake's air spring spacer kits allow for installation of air springs* on lifted trucks while still keeping them at their lifted height. Made of high quality carbon steel with protective powder coating, Pacbrake spacers have been manufactured for maximum strength and corrosion resistance.









**NOTE: For use only with single or double convoluted air springs*



KITS	PART #
2" SPACERS	HP10152
4" SPACERS	HP10154
6" SPACERS	HP10156

INTRODUCING AMP WIRELESS CONTROLS

AMP Wireless Air Spring Controls give you the ability to adjust your air spring pressure with your phone. It is the perfect means to control your vehicle's air suspension system, giving you the freedom to adjust your air springs from both inside and outside of the vehicle.

-  **Adjust your air springs independently to accommodate different loads and road conditions**
-  **The App has 3 built-in memory settings for customized adjustments and reads real time pressure feedback**
-  **Military grade robust pneumatic solenoids designed to withstand extreme environments**
-  **IP67 rated controller that is waterproof and debris resistant**
-  **Easily serviceable parts with replaceable components that are simple to access**
-  **Pre-assembled plug and play harnesses for quick and effortless install**
-  **1 Hour Install with common mechanic tools
No drilling required**
-  **Universal fit – Fits the frame of any vehicle and works with any air spring or onboard air system**

AMP WIRELESS CONTROLS AIR BOARD ASSEMBLY

Comes complete with everything required for install:
Air lines, connectors & mounting hardware.
Proudly made in Canada. 🇨🇦



*Smartphone not included in the kit



**WHO NEEDS ANOTHER REMOTE?
CONTROL YOUR AIR SPRINGS WITH YOUR
PHONE, TRY OUR NEW AMP WIRELESS APP**



AIR SUSPENSION

AIR SPRING CONTROLS

ONBOARD AIR

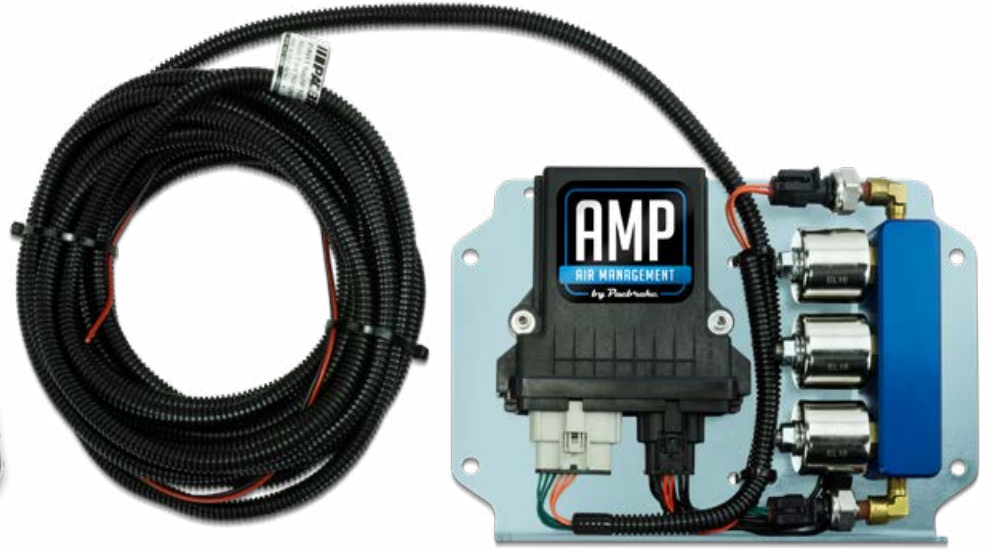
COMPONENTS

WARRANTY

Wireless Air Spring Controls



AMP Wireless Air Spring Controls give you the ability to adjust your air spring pressure from your phone, with the touch of a button. No more fiddling around with an air chuck and pressure gauge, no more running wires or drilling holes through your vehicle's dash and no more plastic remotes.



NOTE: Phone is not included

WIRELESS AIR SPRING CONTROLS

Who needs another remote control? AMP Wireless Air Spring Controls give you the ability to adjust your air spring pressure from your phone with the touch of a button. It is the perfect means to control your vehicle's air suspension system. Adjust your air springs independently from inside and outside of the vehicle.

HP10316

AMP WIRELESS AIR SPRING CONTROLS (INDEPENDENT ACTIVATION)

THE KIT COMES WITH EVERYTHING REQUIRED FOR INSTALL

- AMP Wireless Controls air board assembly (controller, solenoid block, pressure sensors and harnesses)
- Phone app
- Airlines, pressure connectors and mounting hardware
- Proudly made in Canada, the AMP Wireless Controls come with a 2 year warranty.*

*Refer warranty terms and conditions for additional details.

NOTE: This kit is for vehicles that already have an onboard air system.



HP10316 SPECIFICATIONS	
MAXIMUM AIR PRESSURE	150 psi (gauge) [10.3 bar]
CONTINUOUS AIR TEMPERATURE	-40°F to +248°F [-40°C to +85°C]
AMBIENT TEMPERATURE RANGE	-40°F to +248°F [-40°C to +85°C]
SUPPLY VOLTAGE	12 VDC Switched Ignition
CURRENT DRAW (STANDBY MODE)	35 mA
CURRENT DRAW (BLUETOOTH CONNECTED)	80 mA
CURRENT DRAW (SOLENOIDS)	1.5A ea.
MOBILE DEVICE OPERATING SYSTEM	Android 4.2 or Newer (Jellybean)
PRESSURE FEEDBACK UNITS	PSI
PRESSURE FEEDBACK ACCURACY	±1
INGRESS PROTECTION (WEATHERPROOF)	IP67 Controller and Connectors
MAXIMUM FRAME SIZE** (WXH)	4.750 x 9.125" [120 x 232 mm]

** Frame size refers to the cross sectional dimensions of the frame. At the time of this release, 4.750" x 9.125" is sufficient for any pickup truck currently on the market.

AIR SUSPENSION

AIR SPRING CONTROLS

ONBOARD AIR

COMPONENTS

WARRANTY

Quick & Effortless Inflation Power



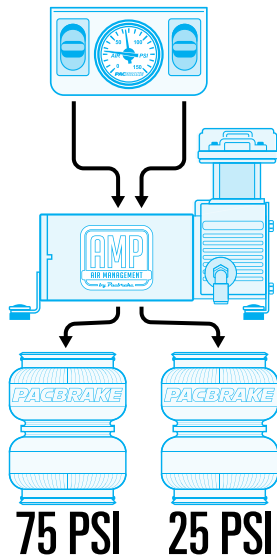
IN-CAB CONTROLS SYSTEMS

Operate your air springs (or other pneumatic accessories) right from the driver's seat with AMP in-cab controls

ACTIVATION OPTIONS:

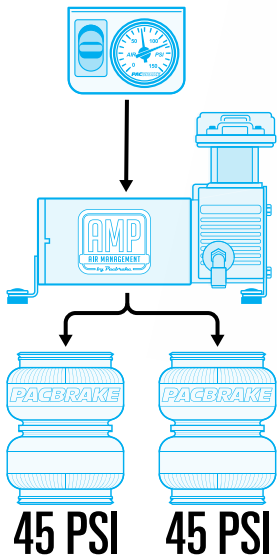
INDEPENDENT ACTIVATION

Inflation is achieved with two separate switches, allowing for individual inflation / deflation of air springs



SIMULTANEOUS ACTIVATION

Inflation is achieved with one switch that inflates / deflates both air springs at the same time.



PERFECT FOR A MULTITUDE OF AIR APPLICATIONS!



ELECTRICAL IN-CAB CONTROL

Featuring a digital gauge or back-lit (dual or single) needle gauge, an ON/OFF compressor switch(es), inflation/deflation switch(es) for the air springs. Choose between simultaneous or independent air spring inflation

In addition to a stackable solenoid block, each kit comes complete with a nylon hose, wire, fittings, fasteners, electrical terminals and in-line fuse holders.



PADDLE VALVE IN-CAB CONTROLS

An economical option for operating air springs with inflation/deflation switch(es) that attach directly to the HP325 series compressor and the air springs. Choose between simultaneous or independent air spring inflation. Available with a digital gauge or a back-lit needle gauge.

AIR SUSPENSION

AIR SPRING CONTROLS

ONBOARD AIR

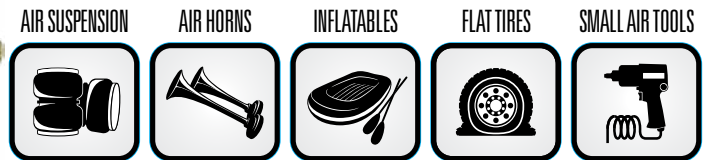
COMPONENTS

WARRANTY

Mechanical In-Cab Controls



Set your ride height from the comfort of your driver's seat with AMP's in-cab controls. Take your towing, hauling, 4x4ing and all other onboard air management to the next level.



PREMIUM IN-CAB CONTROL KITS - MECHANICAL GAUGE

In-cab control kits come with everything you need to operate your air springs (or other pneumatic accessories) from the driver's seat. Various dash activation switch kits are available depending on your air spring operation requirements. 'Independent' inflation is achieved with 2 separate switches, allowing inflation/deflation of each air spring individually. 'Simultaneous' inflation uses a single switch that inflates/deflates both air springs at the same time.



HP10135

AIR SPRING DASH SWITCH (SIMULTANEOUS ACTIVATION)

HP325 AIR COMPRESSOR SPECIFICATIONS:

- 12 VDC
- 33% duty cycle (20 Minutes @ 100 psi), 1.2 CFM
- 150 psi max operating pressure, draws 18 amps

Air tank options: – ½ gallon air tank (HP10053)
– 2½ gallon air tank (HP10050)

***NOTE:** If adding an air tank, a pressure switch is required
HP10110 is for 105-135 psi, HP10111 is for 85-105 psi



HP10098

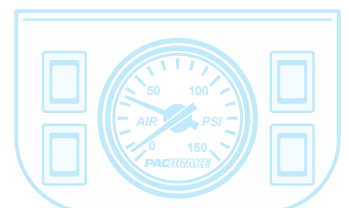
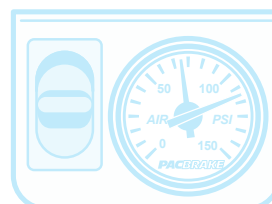
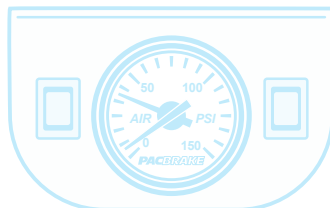
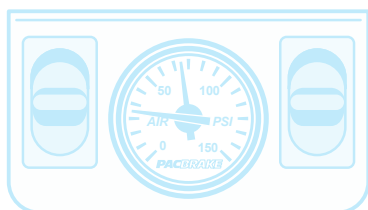
AIR SPRING DASH SWITCHES (INDEPENDENT ACTIVATION)

HP325 AIR COMPRESSOR SPECIFICATIONS:

- 12 VDC
- 33% duty cycle (20 Minutes @ 100 psi), 1.2 CFM
- 150 psi max operating pressure, draws 18 amps

Air Tank Options: – ½ gallon air tank (HP10053)
– 2½ gallon air tank (HP10050)

***NOTE:** If adding an air tank, a pressure switch is required
HP10110 is for 105-135 psi, HP10111 is for 85-105 psi



AIR SUSPENSION

AIR SPRING CONTROLS

ONBOARD AIR

COMPONENTS

WARRANTY

ELECTRICAL IN-CAB CONTROL KITS – MECHANICAL GAUGE

(FOR USE WITH EXISTING ONBOARD AIR)

These kits allow operation of your air springs either simultaneously or independently from the comfort of your driver's seat. Featuring back-lit dual needle gauge, an ON/OFF activation switch to control compressor operation, and switch(es) for inflation/deflation of the air springs.

Pacbrake's unique two way solenoid block gives you the option to stack and combine additional blocks to run your vehicle's air accessories from one central block.

In addition to the solenoid block, each kit comes complete with a nylon hose, wire, fittings, fasteners, electrical terminals and in-line fuse holders.



HP10022 SIMULTANEOUS ACTIVATION

SPECIFIC KIT INFO:

- Air spring inflation kit
- 12 VDC electric actuated two-way pneumatic solenoids
- Solenoids are stackable for multi-application use
- Use this kit in conjunction with one of our air tank kits and air compressor kits to build your own customizable onboard air system



HP10062 INDEPENDENT ACTIVATION

SPECIFIC KIT INFO:

- Air spring inflation kit
- 12 VDC electric actuated two-way pneumatic solenoids
- Solenoids are stackable for multi-application use
- Use this kit in conjunction with one of our air tank kits and air compressor kits to build your own customizable onboard air system

PADDLE VALVE IN-CAB CONTROL KITS – MECHANICAL GAUGE

(FOR USE WITH EXISTING ONBOARD AIR)

An economical option for operating air spring kits with a pneumatic dash switch(es) that attach directly to the tank and the air springs. Choose between simultaneous or independent air spring inflation/deflation.

- Simultaneous inflation is done with a single switch and inflates/deflates both air springs equally, at the same time.
- Independent inflation utilizes 2 separate switches, allowing one to inflate/deflate an air spring individually. Air tank and solenoid blocks are not required for this method of in-cab air control operation, however, should you decide to add an air tank for stored onboard air, you can do so by adding either our 1/2 gallon or 2 1/2 gallon air tank kit (HP10053/HP10050).



HP10133 SIMULTANEOUS ACTIVATION

This HP10133 dash activation kit is designed to integrate in-cab air spring control with a pre-existing air system

Use this kit in conjunction with one of our air tank kits and air compressor kits to build your own customizable onboard air system.



HP10124 INDEPENDENT ACTIVATION

This HP10124 dash activation kit is designed to intergrate in-cab air spring control with a pre-existing air system

Use this kit in conjunction with one of our air tank kits and air compressor kits to build your own customizable onboard air system.

Digital In-Cab Controls



AMP digital in-cab control systems display pressure from 0 psi to 220 psi at 1 psi increments. They allow for continuous monitoring and adjusting of air spring pressure. Choose from independent or simultaneous control.

PREMIUM IN-CAB CONTROL KITS - DIGITAL GAUGE

In-cab control kits come with everything you need to operate your air springs (or other pneumatic accessories) from the driver's seat. Various dash activation switch kits are available depending on your air spring operation requirements. 'Independent' inflation allows inflation/deflation of each air spring individually. 'Simultaneous' inflation inflates/deflates both air springs at the same time.



HP10231

AIR SPRING DASH SWITCH (SIMULTANEOUS ACTIVATION)

HP325 AIR COMPRESSOR SPECIFICATIONS:

- 12 VDC
- 33% duty cycle (20 Minutes @ 100 psi), 1.2 CFM
- 150 psi max operating pressure, draws 18 amps

Air tank options: – ½ gallon air tank (HP10053)
– 2½ gallon air tank (HP10050)

***NOTE:** If adding an air tank, a pressure switch is required
HP10110 is for 105-135 psi, HP10111 is for 85-105 psi



HP10256

AIR SPRING DASH SWITCHES (INDEPENDENT ACTIVATION)

HP325 AIR COMPRESSOR SPECIFICATIONS:

- 12 VDC
- 33% duty cycle (20 Minutes @ 100 psi), 1.2 CFM
- 150 psi max operating pressure, draws 18 amps

Air Tank Options: – ½ gallon air tank (HP10053)
– 2½ gallon air tank (HP10050)

***NOTE:** If adding an air tank, a pressure switch is required
HP10110 is for 105-135 psi, HP10111 is for 85-105 psi



HP10274

AIR SPRING DASH SWITCH (SIMULTANEOUS ACTIVATION)

HP325 AIR COMPRESSOR SPECIFICATIONS:

- 12 VDC
- 33% duty cycle (20 Minutes @ 100 psi), 1.2 CFM
- 150 psi max operating pressure, draws 18 amps

Air tank options: – ½ gallon air tank (HP10053)
– 2½ gallon air tank (HP10050)

***NOTE:** If adding an air tank, a pressure switch is required
HP10110 is for 105-135 psi, HP10111 is for 85-105 psi



HP10273

AIR SPRING DASH SWITCHES (INDEPENDENT ACTIVATION)

HP325 AIR COMPRESSOR SPECIFICATIONS:

- 12 VDC
- 33% duty cycle (20 Minutes @ 100 psi), 1.2 CFM
- 150 psi max operating pressure, draws 18 amps

Air Tank Options: – ½ gallon air tank (HP10053)
– 2½ gallon air tank (HP10050)

***NOTE:** If adding an air tank, a pressure switch is required
HP10110 is for 105-135 psi, HP10111 is for 85-105 psi

BASIC ELECTRICAL IN-CAB CONTROL KITS – DIGITAL GAUGE

(FOR USE WITH EXISTING ONBOARD AIR)

These kits allow operation of your air springs either simultaneously or independently from the comfort of your driver's seat. Featuring a digital gauge, an ON/OFF activation switch to control compressor operation, and switch(es) for inflation/deflation of the air springs.

Pacbrake's unique two way solenoid block gives you the option to stack and combine additional blocks to run your vehicle's air accessories from one central block.

In addition to the solenoid block, each kit comes complete with a nylon hose, wire, fittings, fasteners, electrical terminals and in-line fuse holders.



HP10262 SIMULTANEOUS ACTIVATION

SPECIFIC KIT INFO:

- Air spring inflation kit
- 12 VDC electric actuated two-way pneumatic solenoids
- Solenoids are stackable for multi-application use
- Use this kit in conjunction with one of our air tank kits and air compressor kits to build your own customizable onboard air system



HP10261 INDEPENDENT ACTIVATION

SPECIFIC KIT INFO:

- Air spring inflation kit
- 12 VDC electric actuated two-way pneumatic solenoids
- Solenoids are stackable for multi-application use
- Use this kit in conjunction with one of our air tank kits and air compressor kits to build your own customizable onboard air system

BASIC PADDLE VALVE IN-CAB CONTROL KITS – DIGITAL GAUGE

(FOR USE WITH EXISTING ONBOARD AIR)

An economical option for operating air spring kits with a pneumatic dash switch(es) that attach directly to the tank and the air springs. Choose between simultaneous or independent air spring inflation/deflation.

- Simultaneous inflation is done with a single switch and inflates/deflates both air springs equally, at the same time.
- Independent inflation utilizes 2 separate switches, allowing one to inflate/deflate an air spring individually. Air tank and solenoid blocks are not required for this method of in-cab air control operation, however, should you decide to add an air tank for stored onboard air, you can do so by adding either our 1/2 gallon or 2 1/2 gallon air tank kit (HP10053/HP10050).



HP10281 SIMULTANEOUS ACTIVATION

SPECIFIC KIT INFO:

- Basic kit
- Features digital gauge and paddle Switch
- Use this kit in conjunction with one of our air tank kits and air compressor kits to build your own customizable onboard air system



HP10272 INDEPENDENT ACTIVATION

SPECIFIC KIT INFO:

- Air spring inflation kit
- 12 VDC electric actuated two-way pneumatic solenoids
- Solenoids are stackable for multi-application use
- Use this kit in conjunction with one of our air tank kits and air compressor kits to build your own customizable onboard air system

Additional quality air products from a name you trust

Pacbrake's AMP line offers a growing range of dependable air management products and customizable air management system solutions for your vehicle.



ONBOARD AIR SYSTEMS



AMP AIR COMPRESSORS

HP325 SERIES - Our 1/4 HP AMP air compressors have a 33% duty cycle (20 minutes @ 100 psi) and are offered in both 12 and 24 VDC.

HP425 SERIES - Our 1/4 HP AMP air compressors have a 50% duty cycle (30 minutes @ 100 psi) and are offered in 12 VDC.

HP625 SERIES - Our 3/4 HP AMP air compressors have a 100% duty cycle (1 Hour @ 100 psi) and are offered in two pump head configurations: vertical (available in 12 and 24 VDC) & horizontal (12 VDC).

All AMP compressors have a max working pressure of 150 psi and are an oil-less design. They contain sealed bearings, a PTFE piston ring & a copper wire wound permanent magnet motor.



AMP AIR TANKS

Available in three air tank sizes:
1/2 gallon (C11940), 2 1/2 gallon (HP10013) and 5 gallon (HP10014).

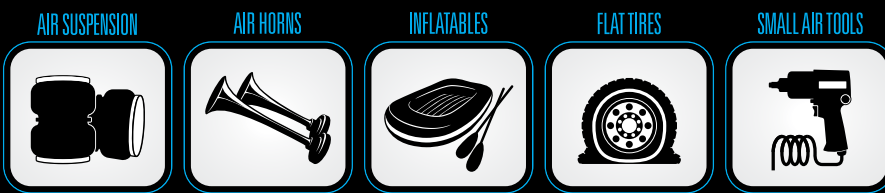
Choose from polished aluminum or steel tanks. All of our steel air tanks are painted and have a rust inhibitor internally applied. Each tank meets ASME specifications and has a maximum working pressure of 150 psi (steel) or 200 psi (aluminum). Multiple NPT ports are provided for auto drains and various air accessories.

All of our air tank kits have welded on mounting brackets. Kits include a 25 ft coiled air hose & accessories.



Quick & Effortless Inflation Power

PERFECT FOR A MULTITUDE OF AIR APPLICATIONS!



HP325 SERIES ONBOARD AIR KITS

AMP onboard air systems are all 33% duty cycle (20 minutes @ 100 psi) and increase air volume depending on the tank size (for compressed air storage).

Each onboard air system comes complete with compressor, air tank, fittings, pressure switch, relay(s), electrical connectors and all applicable accessories.

Pacbrake can help you make a custom onboard air kit for your specific vehicle/applications. Contact us at: [800.663.0096](tel:800.663.0096)
info@pacbrake.com



HP10163 ONBOARD AIR KIT (WITH 1/2 GALLON AIR TANK)

Compressor Model: HP10143 (12 VDC)

KIT INCLUDES:

- 1/2 Gallon Air Tank (C11940)
- Curly Hose Air Accessory Kit (C11657)
- All necessary wiring, harnesses, fittings and fasteners



HP10164 ONBOARD AIR KIT (WITH 2 1/2 GALLON AIR TANK)

Compressor Model: HP10143 (12 VDC)

KIT ALSO INCLUDES:

- 2 1/2 Gallon Air Tank (HP10013)
- Curly Hose Air Accessory Kit (C11657)
- All necessary wiring, harnesses, fittings and fasteners

HP325 SERIES AIR COMPRESSOR KITS

Pacbrake's HP325 series AMP air compressors have a 33% duty cycle (20 minutes @ 100 psi) and are offered in both 12 and 24 VDC. These 1/4 horsepower compressors have an oil-less design, sealed bearings, a PTFE piston ring, a copper wire wound permanent magnet motor and a hard anodized aluminum sleeve.

The Premium Air Compressor Kit offers pre-built wiring harnesses for the ultimate ease of installation.

- Sealed bearings
- Cast aluminum cylinder head
- Hard anodized aluminum cylinder
- PTFE piston ring
- Mountable in any orientation



HP10066 PREMIUM KIT 12VDC KIT

Compressor Model: HP10143 (12 VDC)

Compressor Size: 8.7" x 4" x 6.2" (LxWxH)

221 mm x 102 mm x 158 mm

Compressor Weight: 5.5 lbs [2.5 kg]



HP10142 BASIC 12VDC KIT

HP10151 BASIC 24VDC KIT

Compressor Model: HP10143 (12 VDC)

HP10139 (24 VDC)

Compressor Size: 8.7" x 4" x 6.2" (LxWxH)

221 mm x 102 mm x 158 mm

Compressor Weight: 5.5 lbs [2.5 kg]



HP10142-B BASIC 12VDC BLACK KIT

Compressor Model: HP10143-B (12 VDC)

Compressor Size: 8.7" x 4" x 6.2" (LxWxH)

221 mm x 102 mm x 158 mm

Compressor Weight: 5.5 lbs [2.5 kg]

Compressor Kits

HP625 SERIES AIR COMPRESSOR KITS

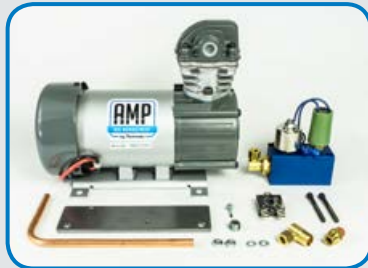
Pacbrake offers various kit options for the HP625 air compressor. The 'premium' kits come complete with pre-built wiring harnesses, for the ultimate ease of installation. All kits include an unloader block, which is required for the HP625 series air compressor when used with an air tank.



HP10631
BASIC 12 VDC (H)
 Head Configuration: Horizontal
 Compressor Model: HP10625H
 Compressor Size (LxWxH)
 11.5" x 9.5" x 6"
 [293 mm x 242 mm x 153 mm]
 Compressor Weight: 18.5 lbs [8.4 kg]



HP10628
PREMIUM 12 VDC KIT (H)
 Head Configuration: Horizontal
 Compressor Model: HP10625H
 Compressor Size (LxWxH)
 11.5" x 9.5" x 6"
 [293 mm x 242 mm x 153 mm]
 Compressor Weight: 18.5 lbs [8.4 kg]



HP10632
BASIC 12 VDC (V)
 Head Configuration: Vertical
 Compressor Model: HP10625V
 Compressor Size (LxWxH)
 11.5" x 6" x 9.5"
 [293 mm x 153 mm x 242 mm]
 Compressor Weight: 18.5 lbs [8.4 kg]



HP10629
PREMIUM 12 VDC KIT (V)
 Head Configuration: Vertical
 Compressor Model: HP10625V
 Compressor Size (LxWxH)
 11.5" x 6" x 9.5"
 [293 mm x 153 mm x 242 mm]
 Compressor Weight: 18.5 lbs [8.4 kg]



HP10633
BASIC 24 VDC (V)
 Head Configuration: Vertical
 Compressor Model: HP10625V-24
 Compressor Size (LxWxH)
 11.5" x 6" x 9.5"
 [293 mm x 153 mm x 242 mm]
 Compressor Weight: 18.5 lbs [8.4 kg]



HP10630
PREMIUM 24 VDC KIT (V)
 Head Configuration: Vertical
 Compressor Model: HP10625V-24
 Compressor Size (LxWxH)
 11.5" x 6" x 9.5" (LxWxH)
 [293 mm x 153 mm x 242 mm]
 Compressor Weight: 18.5 lbs [8.4 kg]



HP10116 (12 VDC)
HP10116-24 (24 VDC)
UNLOADER ASSEMBLY
 (FOR USE WITH TANKS)
 The HP625 series compressor requires the use of an unloader assembly when used with an air tank



HP10115
OPTIONAL AIR INTAKE KIT
 HP10115 is designed for compressor installations with significant exposure to the elements

COMPRESSOR MOUNTING BRACKETS

These Universal Brackets can be mounted anywhere to keep your AMP compressor safe and stable



HP10204
COMPRESSOR BRACKET - HP325 SERIES
 Universal Brackets: Mount Anywhere
 Size: 5.5" x 5.125" x 12" [140 mm x 130 mm x 305 mm] (LxWxH)
 Weight: 4.1 lbs [1.86 kg]
 Material: Zinc Plated Carbon Steel
 Compressor Sold Separately



HP10205
COMPRESSOR BRACKET - HP625 SERIES
 Universal Brackets: Mount Anywhere
 Size: 6.125" x 7.25" x 12.25" [156 mm x 184 mm x 311 mm] (LxWxH)
 Weight: 5.6 lbs [2.54 kg]
 Material: Zinc Plated Carbon Steel
 Compressor Sold Separately

AIR TANK: KITS & ACCESSORIES

Working in conjunction with air compressors, air tanks store the compressed air and hold it until it is required. Storing compressed air allows for quicker product activation, especially when operating more than one product simultaneously. Pacbrake offers three air tank sizes to meet everyone's needs: a ½ gallon tank, a 2½ gallon tank and a 5 gallon tank. Each premium air tank kit comes complete with an air tank, mounting fasteners, airline, fittings, air accessories, an air nozzle and more.

PREMIUM STEEL AIR TANK KITS



HP10053
½ GALLON AIR TANK KIT
TANK SPECIFICS (C11940):
Ports: 2 x ¼" (-4) NPT
Rust Inhibitor: Applied to inside of tank
Max Working Pressure: 150 psi
Size: 6.4" x 5.5" x 6.5" (LxWxH)
 [163 mm x 140 mm x 152 mm]
Weight: 3.4 lbs [1.54 kg]
Welded on Mounting Brackets



HP10051
5 GALLON AIR TANK KIT
TANK SPECIFICS (HP10014):
Ports: 5 x ¼" (-4) NPT
Rust Inhibitor: Applied to inside of tank
Max Working Pressure: 150 psi
Size: 24.0" x 9.9" x 11.0" (LxWxH)
 [610 mm x 251 mm x 279 mm]
Weight: 17.8 lbs [8.07 kg]
Welded on Mounting Brackets
 * Not approved for use with an HP325 AMP series compressor



HP10050
2½ GALLON AIR TANK KIT
TANK SPECIFICS (HP10013):
Ports: 5 x ¼" (-4) NPT
Rust Inhibitor: Applied to inside of tank
Max Working Pressure: 150 psi
Size: 21.0" x 6.9" x 8.9" (LxWxH)
 [533 mm x 175 mm x 203 mm]
Weight: 9.8 lbs [4.45 kg]
Welded on Mounting Brackets

BASIC STEEL AIR TANK KITS



HP10093
2½ GALLON AIR TANK KIT
TANK SPECIFICS (HP10013):
Ports: 5 x ¼" (-4) NPT
Rust Inhibitor: Applied to inside of tank
Max Working Pressure: 150 psi
Size: 21.0" x 6.9" x 8.9" (LxWxH)
 [533 mm x 175 mm x 203 mm]
Weight: 9.8 lbs [4.45 kg]
Welded on Mounting Brackets



HP10094
5 GALLON AIR TANK KIT
TANK SPECIFICS (HP10014):
Ports: 5 x ¼" (-4) NPT
Rust Inhibitor: Applied to inside of tank
Max Working Pressure: 150 psi
Size: 24.0" x 9.9" x 11.0" (LxWxH)
 [610 mm x 251 mm x 279 mm]
Weight: 17.8 lbs [8.07 kg]
Welded on Mounting Brackets
 * Not approved for use with an HP325 series compressor

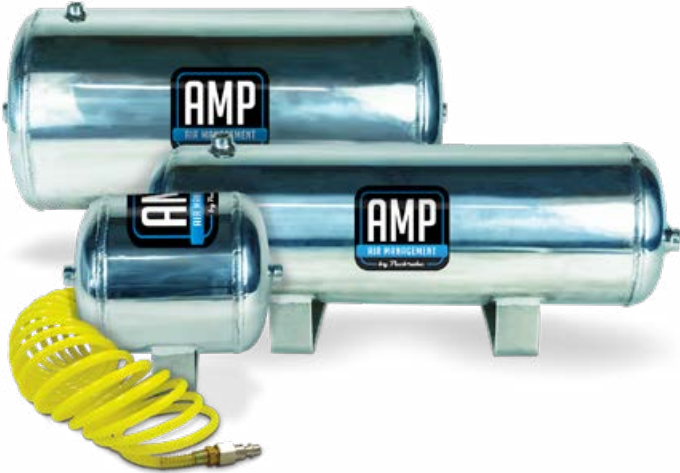
ACCESSORY KITS



C11657
AIR TANK CURLY HOSE & ACCESSORY KIT
 A 25' curly hose with an assortment of accessories is easily stored in a heavy duty nylon bag. Just attach the curly hose to the quick disconnect chuck off of the air compressor (external air source) and perform a variety of jobs including: inflating tires, air mattresses, footballs, beach toys and blowing air (for cleaning, dusting, quick removal of debris) as well as checking air pressure



HP10302
AIR SPRING ACCUMULATOR TANK KIT
 This kit increases the volume of your air spring system and reduces the harsh ride associated with some air springs
TANK SPECIFICS (C11940):
Ports: 2 x ¼" (-4) NPT
Rust Inhibitor: Applied to inside of tank
Max Working Pressure: 150 psi
Size: 6.4" x 5.5" x 6.5" (LxWxH)
 [163 mm x 140 mm x 152 mm]
Weight: 3.4 lbs [1.54 kg]
Welded on Mounting Brackets



ALUMINUM AIR TANK KITS

AMP's polished aluminum tanks are made with less corrosive and lighter material than the standard steel tanks. These tanks also work in conjunction with air compressors to store the compressed air and hold it until it is required. This allows for quicker activation, especially when operating more than one product simultaneously. Pacbrake offers three air tank sizes: a ½ gallon tank, a 2½ gallon tank and a 5 gallon tank. Each premium air tank kit comes complete with an air tank, mounting fasteners, airline, fittings, air accessories, an air nozzle and more.

PREMIUM ALUMINUM AIR TANK KITS



HP10266
½ GALLON AIRTANK KIT
TANK SPECIFICS (HP10257):
Ports: 2 x ¼" (-4) NPT
Max Working Pressure: 200 psi
Size: 8.4" x 5.9" x 7.1" (LxWxH)
 [213.05 mm x 150 mm x 180 mm]
Weight: 1.98 lbs [0.9 kg]
Welded on Mounting Brackets



HP10268
5 GALLON AIRTANK KIT
TANK SPECIFICS (HP10259):
Ports: 2 x ¾" (-6) NPT
 2 x ¼" (-4) NPT
Max Working Pressure: 200 psi
Size: 20.1" x 9.2" x 10.3" (LxWxH)
 [510 mm x 234 mm x 262 mm]
Weight: 7.9 lbs [3.6 kg]
Welded on Mounting Brackets
** Not approved for use with an HP325 AMP series compressor*



HP10267
2 ½ GALLON AIRTANK KIT
TANK SPECIFICS (HP10258):
Ports: 6 x ¼" (-4) NPT
Max Working Pressure: 200 psi
Size: 23.3" x 5.9" x 7.3" (LxWxH)
 [592 mm x 150 mm x 186 mm]
Weight: 4.9 lbs [2.2 kg]
Welded on Mounting Brackets

BASIC ALUMINUM AIR TANK KITS



HP10263
½ GALLON AIRTANK KIT
TANK SPECIFICS (HP10257):
Ports: 2 x ¼" (-4) NPT
Max Working Pressure: 200 psi
Size: 8.4" x 5.9" x 7.1" (LxWxH)
 [213.05 mm x 150 mm x 180 mm]
Weight: 1.98 lbs [0.9 kg]
Welded on Mounting Brackets



HP10265
5 GALLON AIRTANK KIT
TANK SPECIFICS (HP10259):
Ports: 2 x ¾" (-6) NPT
 2 x ¼" (-4) NPT
Max Working Pressure: 200 psi
Size: 20.1" x 9.2" x 10.3" (LxWxH)
 [510 mm x 234 mm x 262 mm]
Weight: 7.9 lbs [3.6 kg]
Welded on Mounting Brackets
** Not approved for use with an HP325 AMP series compressor*



HP10264
2 ½ GALLON AIR TANK KIT
TANK SPECIFICS (HP10258):
Ports: 6 x ¼" (-4) NPT
Max Working Pressure: 200 psi
Size: 23.3" x 5.9" x 7.3" (LxWxH)
 [592 mm x 150 mm x 186 mm]
Weight: 4.9 lbs [2.2 kg]
Welded on Mounting Brackets

AIR SUSPENSION

AIR SPRING CONTROLS

ONBOARD AIR

COMPONENTS

WARRANTY

SINGLE CONVOLUTED AIR SPRING

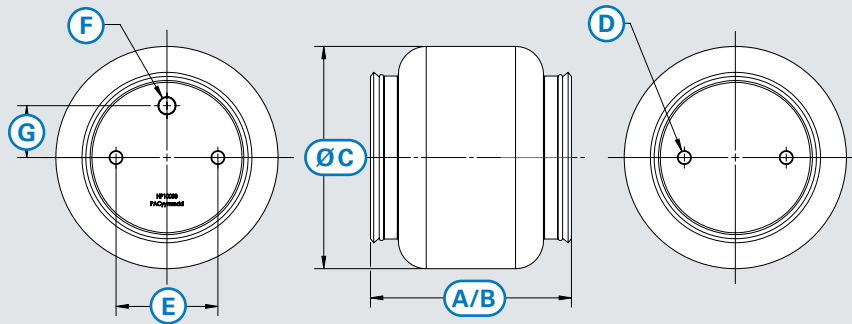
- 6061-T6 aluminum black anodized end caps
- Nylon reinforced rubber air spring
- 20 reinforcement wires



HP10083

- A Working Height:** 1.9" to 7.1" [48.3 mm to 180.3 mm]
- B Free Height:** 5.43" [137.8 mm]
- C Maximum Diameter:** 7" [177.8 mm]
- D Mounting Hole Callout:** 4 x 3/8" - 24
- E Mounting Hole Spacing:** 2 x 2.75" [69.9 mm]
- F Port Callout:** 1/4" (-4) NPT
- G Port Spacing:** 1.40" [35.6 mm]

SPECIFICATIONS	
CLEARANCE:	.5" [12.7 mm] radial clearance required around air spring to avoid abrasion or puncture
INFLATION PRESSURE:	5 psi to 100 psi [34.5 kPa to 690 kPa] <i>Note: maintain a minimum of 5 psi [34 kPa] in air springs at all times</i>
MAXIMUM WORKING LOAD:	2446 lbf [10.9 kN]
WORKING TEMPERATURE RANGE:	-40°F to 158°F [-40°C to 70°C]



DOUBLE CONVOLUTED AIR SPRING

- 6061-T6 aluminum black anodized end caps
- Nylon reinforced rubber air spring
- 20 reinforcement wires



HP10000D

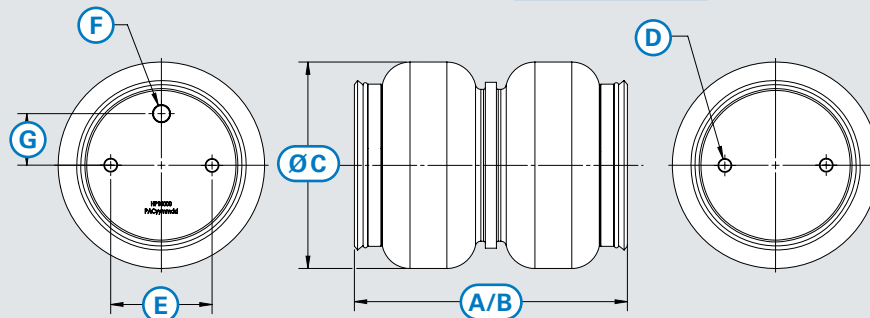
- A Working Height:** 3.0" to 8.4" [76.2 mm to 213.4 mm]
- B Free Height:** 7.41" [188.1 mm]
- C Maximum Diameter:** 6.30" [160 mm]
- D Mounting Hole Callout:** 4 x 3/8" - 24
- E Mounting Hole Spacing:** 2 x 2.75" [69.9 mm]
- F Port Callout:** 1/4" (-4) NPT
- G Port Spacing:** 1.40" [35.6 mm]



HP10068

- A Working Height:** 2.9" to 9.5" [73.7 mm to 241.3 mm]
- B Free Height:** 7.35" [186.7 mm]
- C Maximum Diameter:** 7.24" [184 mm]
- D Mounting Hole Callout:** 4 x 3/8" - 24
- E Mounting Hole Spacing:** 2 x 2.75" [69.9 mm]
- F Port Callout:** 3/8" (-6) NPT
- G Port Spacing:** 1.40" [35.6 mm]

SPECIFICATIONS	
CLEARANCE:	.5" [12.7 mm] radial clearance required around air spring to avoid abrasion or puncture
INFLATION PRESSURE:	5 psi to 100 psi [34.5 kPa to 690 kPa] <i>Note: maintain a minimum of 5 psi [34 kPa] in air springs at all times</i>
MAXIMUM WORKING LOAD:	HP10000 – 2446 lbf [10.9 kN] HP10068 – 2660 lbf [11.8 kN]
WORKING TEMPERATURE RANGE:	-40°F to 158°F [-40°C to 70°C]

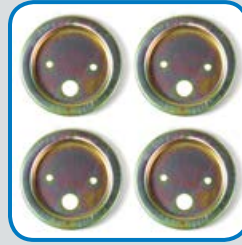
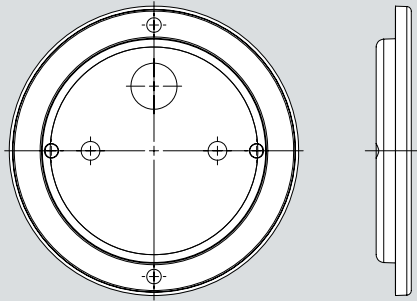


Air Spring Specifications

ROLL PLATES

Note: For use with double convoluted air springs

- Provides a landing surface when bellows roll over end-caps during compression
- .075" [2 mm] thick carbon steel
- Electroplated for corrosion resistance



HP10054

For use with Air Springs: HP10000D
HP10083



HP10069

For use with Air Springs: HP10068

SPACER KITS

NOTE: For use with double and single convoluted air springs

- Install with air springs to add additional height for "lifted" vehicles
- Bolt pattern compatible with all single and double convoluted AMP air springs
- Powder coated low carbon steel construction
- .120" tube, .250" plate, .200" welds
- Mounting hardware included



HP10156

6" SPACER

A Height: 6" [152.4 mm]
B Diameter: 4" [101.6 mm]
C Mounting Hole Callout: 2 x 3/8"-24 thru
D Mounting Hole Callout: 2 x 7/16" thru



HP10152

2" SPACER

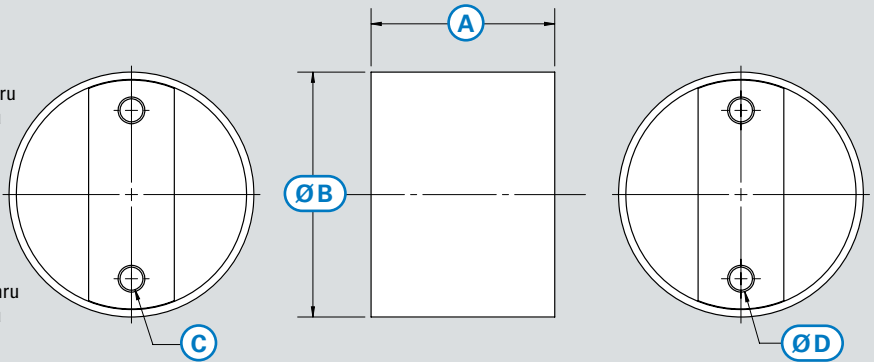
A Height: 2" [50.8 mm]
B Diameter: 4" [101.6 mm]
C Mounting Hole Callout: 2 x 3/8"-24 thru
D Mounting Hole Callout: 2 x 7/16" thru



HP10154

4" SPACER

A Height: 4" [101.6 mm]
B Diameter: 4" [101.6 mm]
C Mounting Hole Callout: 2 x 3/8"-24 thru
D Mounting Hole Callout: 2 x 7/16" thru



HARDWARE

- Hex head and carriage bolts - Grade 5 strength equivalence (where applicable), zinc chromate plated
- Flat head and button head cap screws - ASME B18.3, ASTM F835, black phosphate
- U-bolts - Grade 2 strength equivalence, zinc chromate plated

SLEEVE STYLE AIR SPRING

- 6061-T6 aluminum black anodized end caps
- Nylon reinforced rubber air spring

SPECIFICATIONS

CLEARANCE:	.5" [12.7 mm] radial clearance required around air spring to avoid abrasion or puncture
INFLATION PRESSURE:	5 psi to 100 psi [34.5 kPa to 690 kPa] <i>Note: maintain a minimum of 5 psi [34 kPa] in air springs at all times</i>
MAXIMUM WORKING LOAD:	900 lbf [4 kN]
WORKING TEMPERATURE RANGE:	-40°F to 158°F [-40°C to 70°C]



HP10199

- A Extended Height:** 9.65" [245 mm]
- B Compressed Height:** 2.95" [75 mm]
- C Maximum Diameter:** 5.10" [130 mm]
- D Upper Mounting Thread Callout:** 3/4" - 16
- E Lower Mounting Thread Callout:** 1/2" - 13
- F Port Callout:** 1/8" (-2) NPT



HP10185

- A Extended Height:** 9.88" [251 mm]
- B Compressed Height:** 2.95" [75 mm]
- C Maximum Diameter:** 5.10" [130 mm]
- D Upper Mounting Thread Callout:** 3/4" - 16
- E Lower Mounting Thread Callout:** 1/2" - 13
- F Port Callout:** 1/8" (-2) NPT



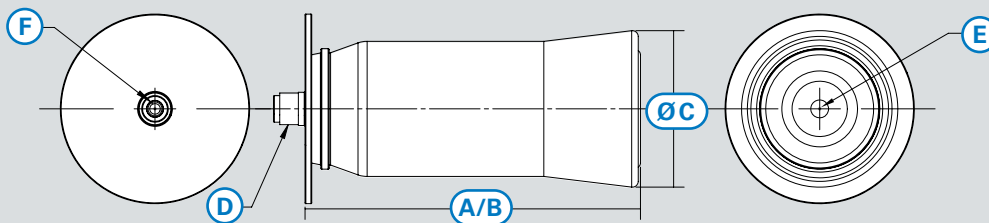
HP10173

- A Extended Height:** 11.73" [298 mm]
- B Compressed Height:** 4.17" [106 mm]
- C Maximum Diameter:** 5.10" [130 mm]
- D Upper Mounting Thread Callout:** 3/4" - 16
- E Lower Mounting Thread Callout:** 1/2" - 13
- F Port Callout:** 1/8" (-2) NPT



HP10001

- A Extended Height:** 13.86" [352 mm]
- B Compressed Height:** 5.16" [131 mm]
- C Maximum Diameter:** 5.10" [130 mm]
- D Upper Mounting Thread Callout:** 3/4" - 16
- E Lower Mounting Thread Callout:** 1/2" - 13
- F Port Callout:** 1/8" (-2) NPT



IN-COIL AIR SPRING

- Grey polyurethane
- Can be folded for insertion between coils

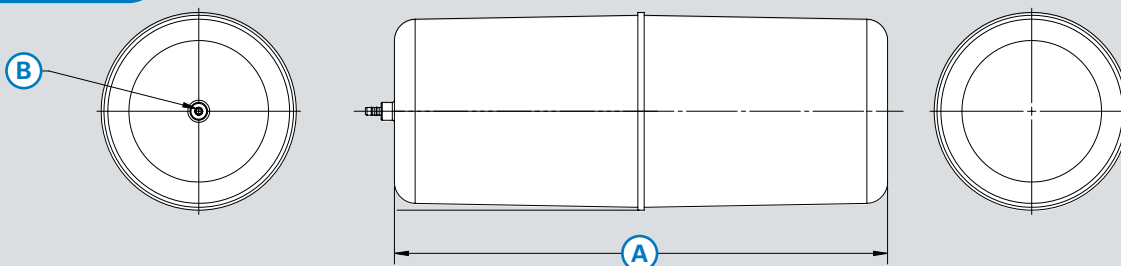


HP10189

- A Free Height:** 11.7" [297.2 mm]
- B Port Callout:** 3/16" [4.8 mm] OD Barb

SPECIFICATIONS

CLEARANCE:	.5" [12.7 mm] radial clearance required around air spring to avoid abrasion or puncture
INFLATION PRESSURE:	5 psi - 35 psi [34.5 kPa to 241 kPa] Maintain a minimum of 5 psi [34 kPa] in air springs at all times
MAXIMUM WORKING LOAD:	1,000 lbf [46 kN]
WORKING TEMPERATURE RANGE:	-40°F to 158°F [-40°C to 70°C]



Air Spring Controls Specifications

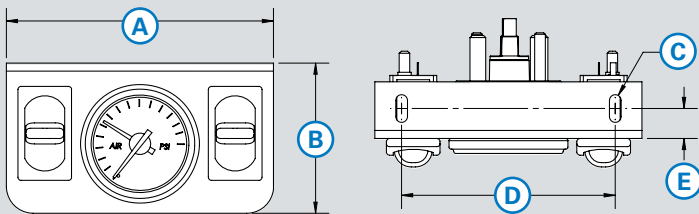
IN-CAB CONTROL ASSEMBLY – MECHANICAL GAUGE

■ Requires a minimum of 6" [101.6mm] clearance behind bracket for routing of air lines

HP0098 GAUGE ASSEMBLY CONTENTS		
PART #	DESCRIPTION	QUANTITY
HP0096	Bracket – Dual Paddle Valve	1
HP10010	Double Input Needle Gauge	1
HP1204	Paddle Switch	2



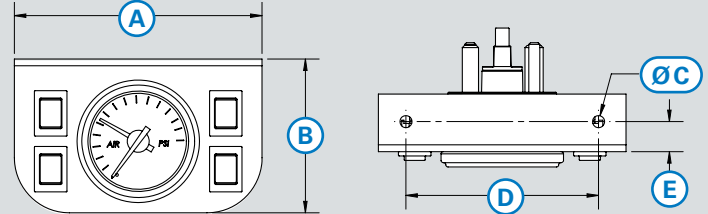
HP0098
INDEPENDENT INFLATION
 DUAL INPUT, DUAL PADDLE VALVE
 A: 5.00" [127.0mm]
 B: 2.81" [71.4mm]
 C: .22" x .52" [5.6mm x 13.2mm]
 D: 4" [101.6mm]
 E: .56" [14.26mm]



HP0084 GAUGE ASSEMBLY CONTENTS		
PART #	DESCRIPTION	QUANTITY
HP1158	Bracket – Quadruple Electrical Switch	1
HP10010	Double Input Needle Gauge	1
HP1039	3-Way Electrical Switch	2
HP1127	2-Way Electrical Switch	2



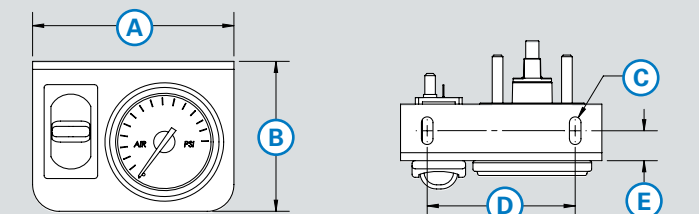
HP0084
INDEPENDENT INFLATION
 DUAL INPUT, QUADRUPLE ELECTRICAL SWITCH
 A: 4.5" [114.3mm]
 B: 2.8" [71.0mm]
 C: .22" [5.6mm]
 D: 3.5" [88.9mm]
 E: .55" [13.85mm]



HP0117 GAUGE ASSEMBLY CONTENTS		
PART #	DESCRIPTION	QUANTITY
HP0097	Bracket – Single Paddle Valve	1
HP20520	Single Input Needle Gauge	1
HP1204	Paddle Switch	1



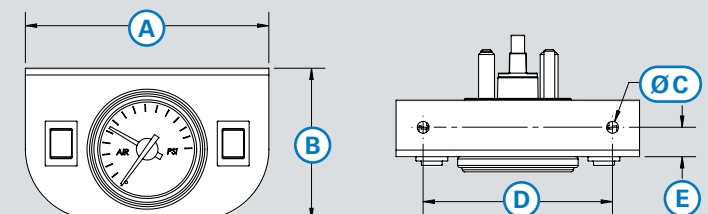
HP0117
SIMULTANEOUS INFLATION
 SINGLE INPUT, SINGLE PADDLE VALVE
 A: 3.78" [95.9mm]
 B: 2.81" [71.4mm]
 C: .22" x .52" [5.6mm x 13.2mm]
 D: 2.78" [70.49mm]
 E: .56" [14.26mm]



HP0089 GAUGE ASSEMBLY CONTENTS		
PART #	DESCRIPTION	QUANTITY
HP1157	Bracket – Dual Electrical Switch	1
HP20520	Single Input Needle Gauge	1
HP1039	3-Way Electrical Switch	1
HP1127	2-Way Electrical Switch	1



HP0089
SIMULTANEOUS INFLATION
 DUAL INPUT, DUAL ELECTRICAL SWITCH
 A: 4.5" [114.3mm]
 B: 2.8" [71.0mm]
 C: .22" [5.6mm]
 D: 2.07" [52.6mm]
 E: .55" [13.85mm]



AIR SUSPENSION

AIR SPRING CONTROLS

ONBOARD AIR

COMPONENTS

WARRANTY

IN-CAB CONTROL ASSEMBLY – DIGITAL GAUGE

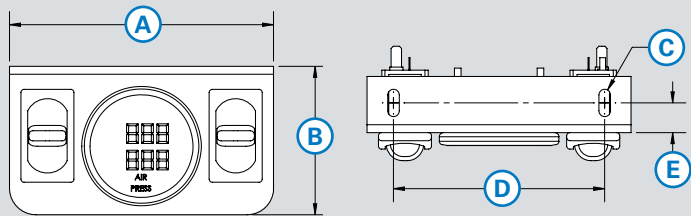
■ Requires a minimum of 6" [101.6mm] clearance behind bracket for routing of air lines

GAUGE ASSEMBLY CONTENTS		
PART #	DESCRIPTION	QUANTITY
HP0096	Bracket – Dual Paddle Valve	1
HP10218	Digital Air Gauge	1
HP1204	Paddle Switch	2



INDEPENDENT INFLATION DUAL INPUT, DUAL PADDLE VALVE (ORDER PARTS SEPARATELY)

- A: 5.00" [127.0mm]
- B: 2.81" [71.4mm]
- C: .22" x .52" [5.6mm x 13.2mm]
- D: 4" [101.6mm]
- E: .56" [14.26mm]

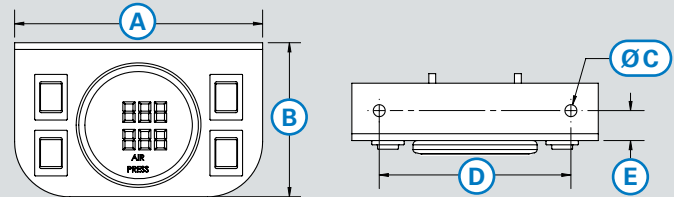


HP10269 GAUGE ASSEMBLY CONTENTS		
PART #	DESCRIPTION	QUANTITY
HP1158	Bracket – Quadruple Electrical Switch	1
HP10275	Digital Air Gauge	1
HP1039	3-Way Electrical Switch	2
HP1127	2-Way Electrical Switch	2



HP10269 INDEPENDENT INFLATION DUAL INPUT, QUADRUPLE ELECTRICAL SWITCH

- A: 4.5" [114.3mm]
- B: 2.8" [71.0mm]
- C: .22" [5.6mm]
- D: 3.5" [88.9mm]
- E: .55" [13.85mm]

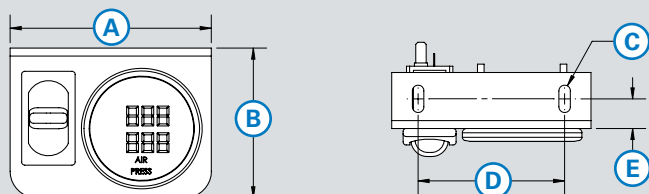


GAUGE ASSEMBLY CONTENTS		
PART #	DESCRIPTION	QUANTITY
HP0097	Bracket – Single Paddle Valve	1
HP10218	Digital Air Gauge	1
HP1204	Paddle Switch	1



SIMULTANEOUS INFLATION SINGLE INPUT, SINGLE PADDLE VALVE (ORDER PARTS SEPARATELY)

- A: 3.78" [95.9mm]
- B: 2.81" [71.4mm]
- C: .22" x .52" [5.6mm x 13.2mm]
- D: 2.78" [70.49mm]
- E: .56" [14.26mm]

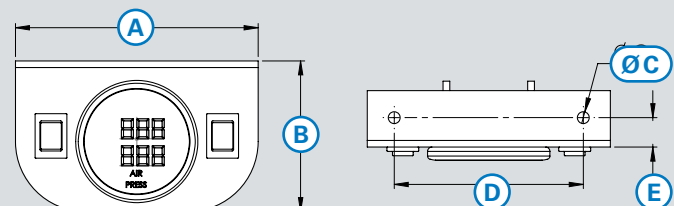


HP10280 GAUGE ASSEMBLY CONTENTS		
PART #	DESCRIPTION	QUANTITY
HP1157	Bracket – Dual Electrical Switch	1
HP10275	Digital Air Gauge	1
HP1039	3-Way Electrical Switch	1
HP1127	2-Way Electrical Switch	1



HP10280 SIMULTANEOUS INFLATION DUAL INPUT, DUAL ELECTRICAL SWITCH

- A: 4.5" [114.3mm]
- B: 2.8" [71.0mm]
- C: .22" [5.6mm]
- D: 2.07" [52.6mm]
- E: .55" [13.85mm]



Air Spring Controls Specifications

MECHANICAL AIR GAUGES

- Air pressure shown from 0 psi to 150 psi in 10 psi increments – numeric markings at 0, 50, 100 & 150 psi
- Black bezel, white dial face
- Available with single input (single needle), or dual input (dual needle)
- Installation hole $\varnothing 2\text{-}1/16"$ [$\varnothing 52.5$ mm] (Gauge body min 2", bezel max 2.2")
- Mounting hardware provided



HP10010 DUAL NEEDLE

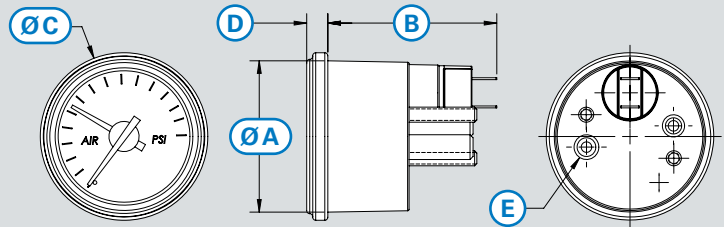
- A: 2.01" [51.1 mm]
- B: 2.25" [57 mm]
- C: 2.23" [56.5 mm]
- D: .28" [7.1 mm]
- E: 2 x 1/8" (-2) NPT Male



HP20520 SINGLE NEEDLE

- A: 2.01" [51.1 mm]
- B: 2.25" [57 mm]
- C: 2.23" [56.5 mm]
- D: .28" [7.1 mm]
- E: 1 x 1/8" (-2) NPT Male

SPECIFICATIONS	
MAXIMUM WORKING PRESSURE	0 psi to 150 psi [0 kPa to 1034 kPa]
ACCURACY:	+/- 3 psi [+/- 21 kPa]
WORKING TEMPERATURE RANGE:	-20°F to 175°F [-29°C to 79°C]
VIBRATION:	.030" harmonic motion, 20 Hz to 60 Hz for 1/3 hour per axis
SHOCK:	44 g to 55 g, 9 ms to 13 ms half sine, 25 shocks
HUMIDITY:	48 hours at 95% R.H. and 100°F [38°C]
SALT SPRAY (BEZEL FACE):	ASTM 117, 48 hours



DIGITAL AIR GAUGE KITS

- Pressure shown from 0 psi to 220 psi – 1 psi increments
- 12 VDC supply voltage, 3 A fuse required within 20" [500 mm] of power source
- Black bezel, black face, blue digits – two stage dimming feature – can dim when headlight switch is engaged
- If signal is lost, display will flash as a warning
- Installation hole $\varnothing 2\text{-}1/16"$ [$\varnothing 52.5$ mm]
- 24" [600 mm] wire pigtail extending from gauge
- EMC Tested – CE certified



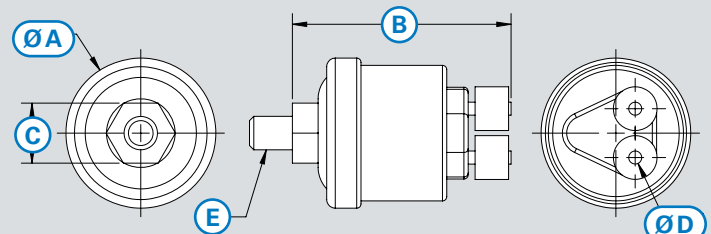
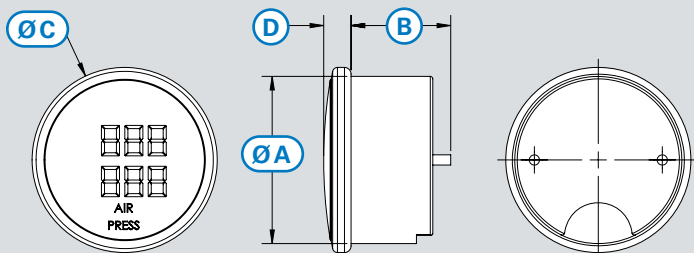
HP10218 KIT* DUAL INPUT

- A: 2.05" [51.9 mm]
 - B: 1.22" [31 mm]
 - C: 2.27" [57.5 mm]
 - D: .34" [8.5 mm]
- *Kit includes gauge & 2 HP10219 sensors



HP10219 AIR PRESSURE SENSOR

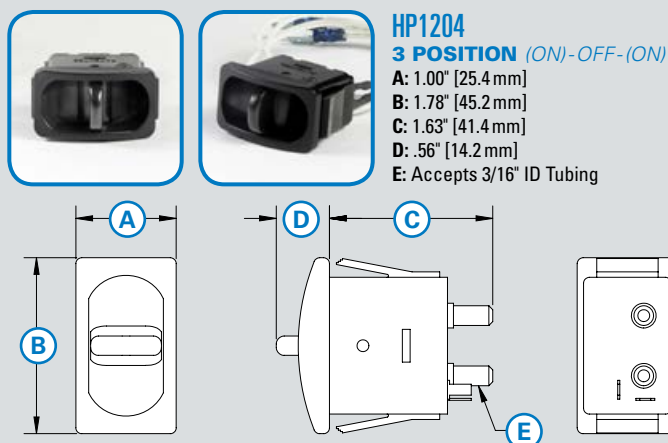
- A: 1.75" [44.5 mm]
- B: 2.55" [64.8 mm]
- C: .70" [17.8 mm]
- D: 2 x .15" [2 x 3.9 mm]
- E: 1/8" (-2) NPT Male



PADDLE VALVE (PNEUMATIC SWITCHES)

- 3-way dead center paddle style actuator
- 27.5° throw
- Black thermoplastic construction – meets FMVSS 302 flammability requirements
- Supply and delivery ports: barbed fitting – accepts 3/16" ID tube – vented to atmosphere through rear of switch
- Fits .89" x 1.61" [22.6mm x 40.9 mm] openings, R.063" [R1.6mm] max corner radii, .084" to .125" [2.13mm to 3.18mm] panel thickness
- Rated for steady state direct current (DC) of 7.5 A maximum
- Maximum voltage of 15 VDC at zero current
- Maximum 25% duty cycle – maximum "on" time 60 seconds
- Voltage drop across lead wire terminal will not exceed 0.52 VDC at 7 A direct current
- 24" [609 mm] wire leads

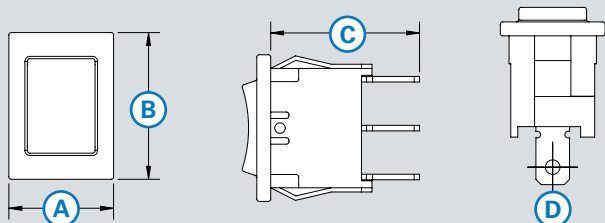
SPECIFICATIONS	
MAXIMUM WORKING PRESSURE:	150 psi [1,034 kPa]
BLOW OFF PRESSURE AND MINIMUM FLOW RATE:	30 SFCM @ 150 psi [850 L/min @ 1,034 kPa]
TEMPERATURE RANGE:	-40°F to 165°F [-25°C to 120°C]



ELECTRICAL SWITCHES

- Snap-in mounting
- Fit .520" x .776" [13.2 mm x 19.7 mm] openings
- .187" [4.75 mm] wide blade terminals
- Plastic body

SPECIFICATIONS	
WORKING TEMPERATURE:	-4°F to 185°F [-20°C to 85°C]



BRACKETS

- Any AMP gauge can be used with any bracket
- 14 gauge steel
- Matte black



HP0096
DUAL PADDLE VALVE
 Accepted Switches: HP1204



HP0097
SINGLE PADDLE VALVE
 Accepted Switches: HP1204



HP1158
QUADRUPLE ELECTRICAL SWITCH
 Accepted Switches: HP1039
 HP1127



HP1157
DUAL ELECTRICAL SWITCH
 Accepted Switches: HP1039
 HP1127

Solenoid Specifications

SOLENOID OPERATED PNEUMATIC DIRECTIONAL CONTROL VALVES

Pacbrake offers various vacuum and air solenoid configurations to meet any specialty requirement or mounting location. Our engineered commercial-duty and severe-duty solenoids have been through some of the toughest testing grounds the world has to offer.

Pacbrake's experience designing cost effective hydraulic and pneumatic solenoids with demanding requirements has equipped Pacbrake with the experience to integrate solenoid controls into any application.



KEY FEATURES

- Vacuum and air solenoids
- 2 and 3 way solenoid configurations
- Stackable applications available
- 12 and 24 volt solenoids rated for automotive use
- Severe-duty applications

3-WAY, 2-POSITION

- 'IN' port normally closed
- 'CYL' port normally open to exhaust (atmosphere)
- 18" [457 mm] long 18 AWG wire lead length
- Anodized aluminum valve body
- Zinc chromate plated carbon steel solenoid body

SPECIFICATIONS

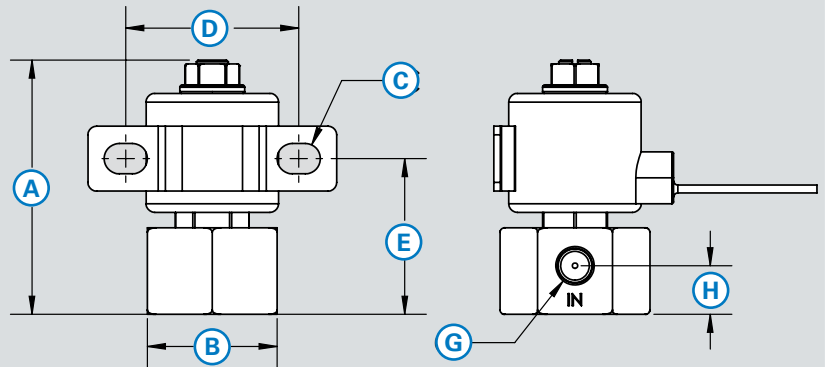
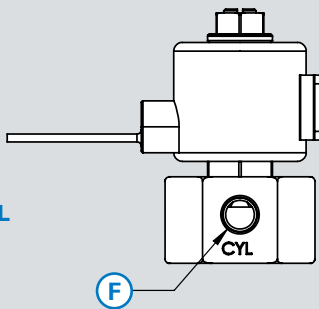
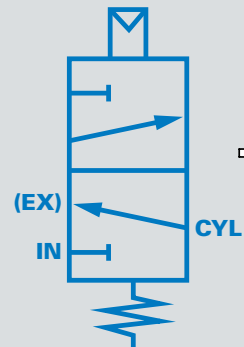
WORKING TEMPERATURE RANGE:	-40°F to 185°F [-40°C to 85°C]
MAXIMUM WORKING PRESSURE:	0 psi to 150 psi [0 kPa to 1034 kPa]
ORIFICE SIZE:	2 x 3/32" [2 x 2.38 mm]



C11935 PNEUMATIC SOLENOID
Voltage Range: 12 VDC
Coil Resistance: 10 Ω
A: 2.91" [74.0 mm]
B (Hex): 1.50" [38.1 mm]
C: .35" X .50" [8.9 mm X 12.7 mm]
D: 2.00" [50.8 mm]
E: 1.8" [45.7 mm]
F (Port): 1/8"-27 (-2) NPTF
G (Port): 1/8"-27 (-2) NPTF
H: .563" [14.3 mm]



C11979 PNEUMATIC SOLENOID
Voltage Range: 24 VDC
Coil Resistance: 50 Ω
A: 2.91" [74.0 mm]
B (Hex): 1.50" [38.1 mm]
C: .35" X .50" [8.9 mm X 12.7 mm]
D: 2.00" [50.8 mm]
E: 1.8" [45.7 mm]
F (Port): 1/8"-27 (-2) NPTF
G (Port): 1/8"-27 (-2) NPTF
H: .563" [14.3 mm]



AIR SUSPENSION

AIR SPRING CONTROLS

ONBOARD AIR

COMPONENTS

WARRANTY

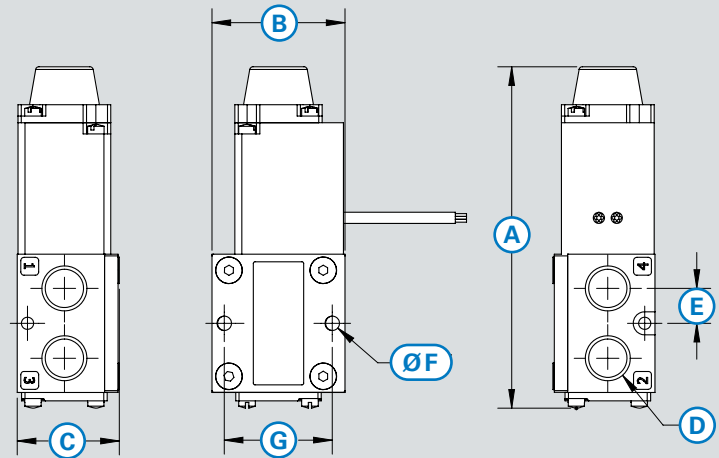
4-WAY, 2-POSITION

- 6 Watt
- .5 Amps current holding
- Spring return with flush non-locking override
- 1/8" (-2) NPTF
- Lubricant free assembly
- Loctite applied to fasteners
- Energize time: 0.012 ms
- De-energize time: 0.006 sec
- Designed to meet NEMA 4/IP65
- Flow capacity: 197 NI/m @ 6 bar upstream /5 bar downstream [9.3 SCM @ 80 psig upstream/atmosphere downstream]
- 15" [457 mm] long 18 AWG pigtail



C11829
LIGHT DUTY SOLENOID
Voltage Range: 12 VDC
Coil Resistance: 25 Ω
A: 3.14" [79.8 mm]
B: 1.19" [30.2 mm]
C: .90" [22.9 mm]
D: 4 x 1/8" (-2) NPTF
E: 4 x .31" [4 x 7.9 mm]
F: 3 x .11" [3 x 2.8 mm] Thru
G: .97" [24.6 mm]

SPECIFICATIONS	
WORKING TEMPERATURE RANGE:	-40°F to 185°F [-40°C to 85°C]
WORKING PRESSURE:	28" Hg to 150 psig [Vacuum to 10 bar]
FLOW RATE:	Cv 0.20



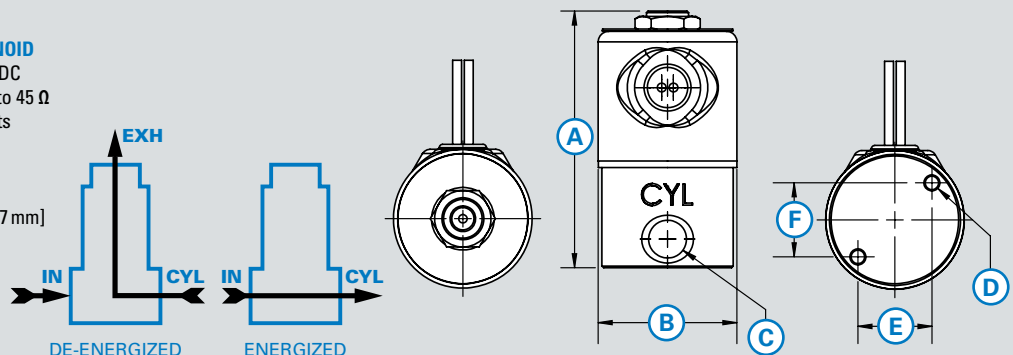
3-WAY, 2-POSITION

- Direct acting, spring return
- Inlet – normally closed, Cyl – normally open to vent (atmosphere)
- 1/4" (-4) NPTF IN and CYL port
- 6" [152 mm] long 18 AWG (UL 3173) pigtail
- Brass solenoid base
- Zinc chromate plated carbon steel solenoid body
- 1N4006 internal suppression diode
- NEMA 1 Protection



C10611
HEAVY DUTY SOLENOID
Voltage Range: 24 VDC
Coil Resistance: 36 to 45 Ω
Max Power: 14 Watts
A: 3.052" [77.5 mm]
B: 1.560" [39.6 mm]
C: 2 x 1/4" (-4) NPT
D: 10-32 UNF .380 [9.7 mm]
E: .880" [22.4 mm]
F: .880" [22.4 mm]

SPECIFICATIONS	
WORKING TEMPERATURE RANGE:	-40°F to 248°F [-40°C to 120°C]
MAXIMUM WORKING PRESSURE:	0 psi to 135 psi [0 kPa to 931 kPa]
FLOW RATE	Cv 0.18
PROOF PRESSURE:	500 psi [3448 kPa]
BURST PRESSURE:	6000 psi [41369 kPa]
ORIFICE SIZE:	2 x 3/32" [1.52+/-0.08 mm x 2.38 mm]
MAX FREQUENCY:	300 Cpm
RESPONSE TIME:	5-15 ms



Compressor Specifications

HP325 SERIES AMP AIR COMPRESSORS

Pacbrake's HP325 series air compressors have a 33% (20 minutes @ 100 psi) duty cycle and are offered in both 12 and 24 VDC. These ¼ horsepower compressors utilize an oil-less design, sealed bearings, a PTFE piston ring, a copper wire wound permanent magnet motor and a hard anodized aluminum sleeve.

The Premium Air Compressor Kit offers pre-built wiring harnesses for the ultimate ease in installation.

- Sealed bearings
- Cast aluminum cylinder head
- Hard anodized aluminum cylinder
- PTFE piston ring
- Mountable in any orientation



HP10143
HP325 12 VDC AIR COMPRESSOR
Duty Cycle: 33% (20 Minutes @ 100 psi)
Max Working Pressure: 150 psi [1034 kPa]
Voltage: 12 VDC
Size: 8.7" x 4" x 6.2" (LxWxH)
 [221 mm x 102 mm x 158 mm]
Weight: 5.5 lbs [2.49 kg]

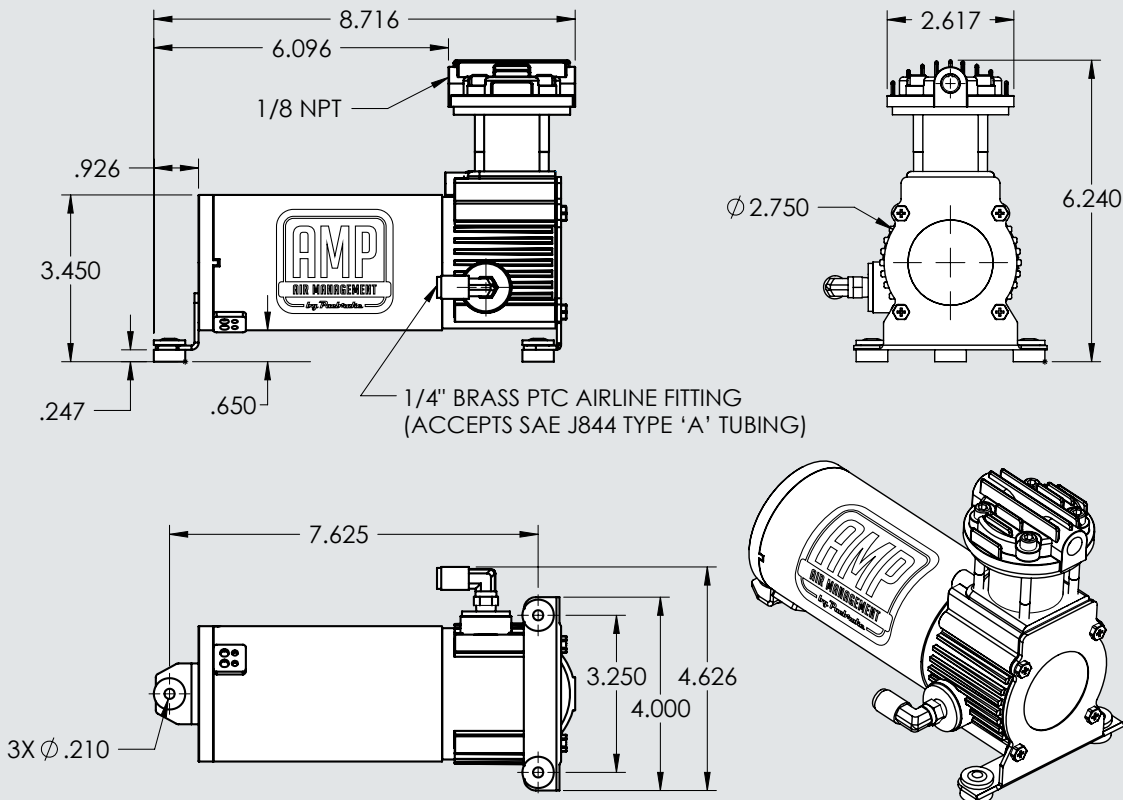


HP10143-B
HP325 12 VDC AIR COMPRESSOR
Duty Cycle: 33% (20 Minutes @ 100 psi)
Max Working Pressure: 150 psi [1034 kPa]
Voltage: 12 VDC
Size: 8.7" x 4" x 6.2" (LxWxH)
 [221 mm x 102 mm x 158 mm]
Weight: 5.5 lbs [2.49 kg]



HP10139
HP325 24 VDC AIR COMPRESSOR
Duty Cycle: 33% (20 Minutes @ 100 psi)
Max Working Pressure: 150 psi [1034 kPa]
Voltage: 24 VDC
Size: 8.7" x 4" x 6.2" (LxWxH)
 [221 mm x 102 mm x 158 mm]
Weight: 5.5 lbs [2.49 kg]

HP325 SERIES AIR COMPRESSOR DIMENSIONS (IN INCHES)



AIR SUSPENSION

AIR SPRING CONTROLS

ONBOARD AIR

COMPONENTS

WARRANTY

12 VDC SPECIFICATIONS

GENERAL DATA

PART NUMBER	HP10143
WEIGHT	5.5 lbs [2.49 kg]
AMBIENT TEMPERATURE RANGE	-40°F to 158°F [-40°C to 70°C]
MAX DUTY CYCLE	33% (20 minutes @ 100 psi)
INGRESS PROTECTION	IP55 w/remote intake (included)

PNEUMATIC DATA

RATED FLOW	1.1 SCFM
MAX WORKING PRESSURE	150 psi [1034 kPa]
MAX RESTART PRESSURE	135 psi [931 kPa]

ELECTRICAL MOTOR DATA

MOTOR TYPE	Permanent magnet DC
OPERATING VOLTAGE	12 VDC ± 15%
MAXIMUM CURRENT DRAW	17 A
NOMINAL POWER	¼ HP
NOMINAL SPEED	3000 RPM

*Operating life may be dependent on application

24 VDC SPECIFICATIONS

GENERAL DATA

MODEL	HP10139
WEIGHT	5.5 lbs [2.49 kg]
AMBIENT TEMPERATURE RANGE	-40°F to 158°F [-40°C to 70°C]
MAX DUTY CYCLE	33% (20 minutes @ 100 psi)
INGRESS PROTECTION	IP55 w/remote intake (included)

PNEUMATIC DATA

RATED FLOW	1.1 SCFM
MAX WORKING PRESSURE	150 psi [1034 kPa]
MAX RESTART PRESSURE	135 psi [931 kPa]

ELECTRICAL MOTOR DATA

MOTOR TYPE	Permanent magnet DC
OPERATING VOLTAGE	24 VDC ± 15%
MAXIMUM CURRENT DRAW	9 A
NOMINAL POWER	¼ HP
NOMINAL SPEED	3000 RPM

*Operating life may be dependent on application

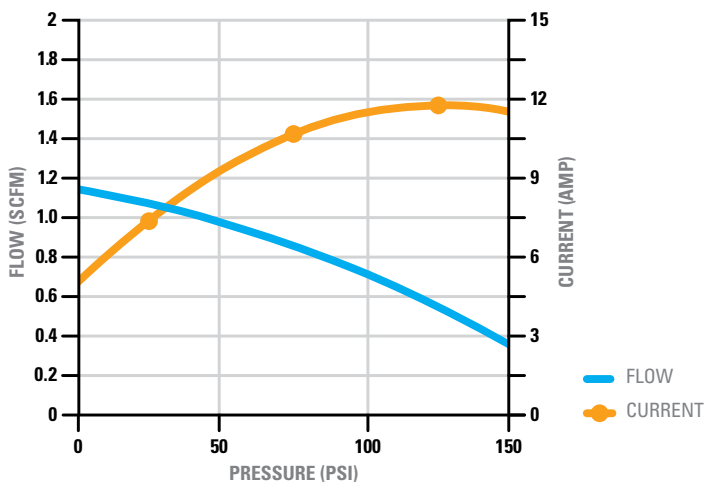
12 VDC TANK FILL TIME

TANK SIZE	TANK PART #	0 to 100 psi	100 to 150 psi
½ Gallon	HP10053	23 seconds	23 seconds
2 ½ Gallon	HP10050	157 seconds	130 seconds

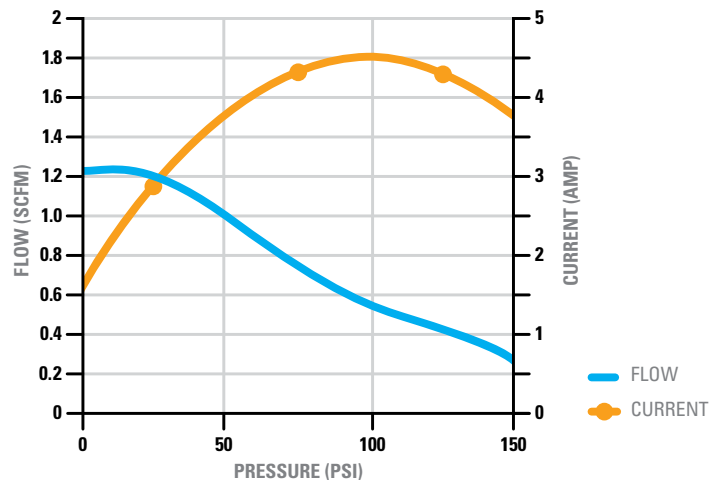
24 VDC TANK FILL TIME

TANK SIZE	TANK PART #	0 to 100 psi	100 to 150 psi
½ Gallon	HP10053	33 seconds	25 seconds
2 ½ Gallon	HP10050	174 seconds	155 seconds

HP325 12 VDC - CURRENT & FLOW RATE VS PRESSURE (13.8 VDC)



HP325 24 VDC - CURRENT & FLOW RATE VS PRESSURE (27.6 VDC)



Compressor Specifications



Introducing Pacbrake's NEW 425 series compressors with a 50% duty cycle, capable of filling a 5 gallon air tank in less than 5 minutes. Heavy duty compressors for wherever the road takes you.

HP425 SERIES AMP AIR COMPRESSORS

Pacbrake's HP425 series air compressors have a 50% duty cycle [30 min on/30 min off] and are offered in 12 VDC. These ¼ horsepower compressors utilize an oil-less design, sealed bearings, a PTFE piston ring, a copper wire wound permanent magnet motor and a hard anodized aluminum sleeve.

- High temperature sealed bearings
- PTFE piston rings (Oil-less design)
- Hard anodized aluminum cylinder sleeve
- Copper wire wound permanent magnet motor
- Check valve to prevent hard start-up
- Mountable in any orientation
- Thermal switch limit 221°F (105°C), Auto reset at 185°F (85°C)
- Crank case mounted air filter, IP52 (Remote, IP67)

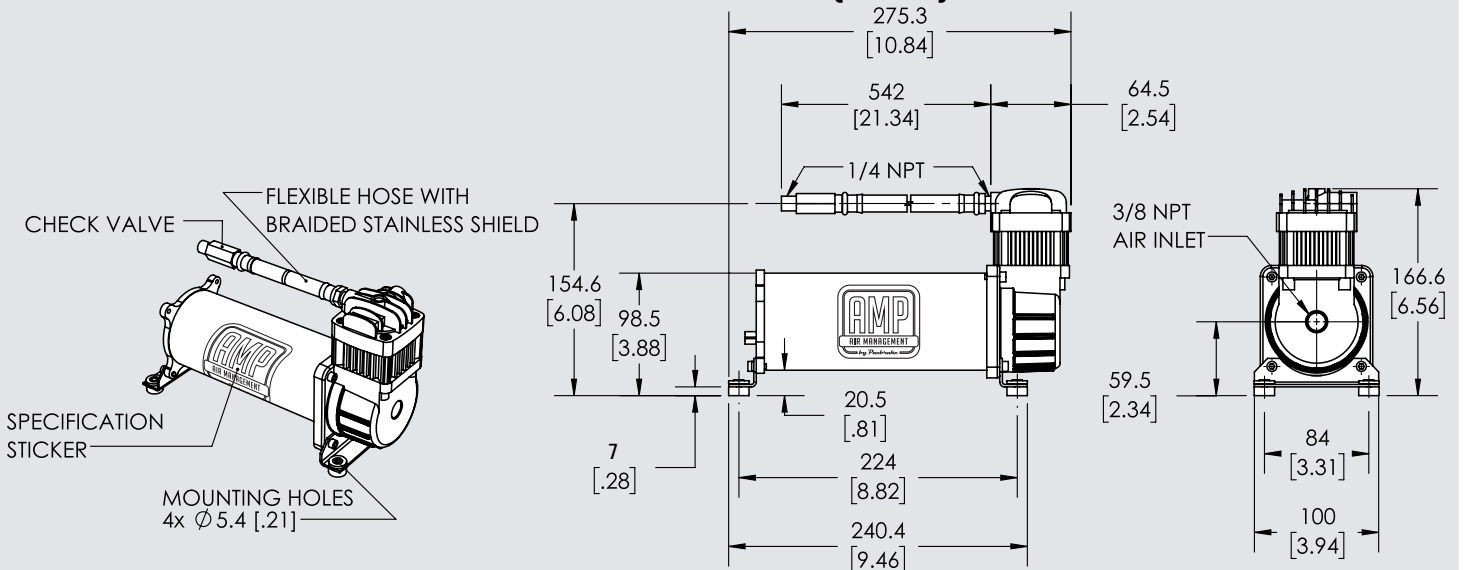


HP10300
HP425 12 VDC AIR COMPRESSOR
Duty Cycle: 50% [30 min on / 30 min off]
Max Working Pressure: 200psi [1379 kPa]
Voltage: 12 VDC
Size: 10.8" x 3.9" x 6.6" (LxWxH)
 [275 mm x 100 mm x 167 mm]
Weight: 10.26 lbs [4.65 kg]



HP10300-B
HP425 12 VDC AIR COMPRESSOR
Duty Cycle: 50% [30 min on / 30 min off]
Max Working Pressure: 200psi [1379 kPa]
Voltage: 12 VDC
Size: 10.8" x 3.9" x 6.6" (LxWxH)
 [275 mm x 100 mm x 167 mm]
Weight: 10.26 lbs [4.65 kg]

HP425 SERIES AIR COMPRESSOR DIMENSIONS IN MILLIMETERS (INCHES)



AIR MANAGEMENT

FOR ALL YOUR ADVENTURES

HP425 12 VDC SPECIFICATIONS

GENERAL DATA

PART NUMBER	Chrome [HP10300], Black [HP10300-B]
WEIGHT	10.26 lbs [4.65 kg]
AMBIENT TEMPERATURE RANGE	-40°F to 158°F [-40°C to 70°C]
MAX DUTY CYCLE	50% [30 min on / 30 min off]

PNEUMATIC DATA

RATED FLOW	1.75 SCFM [0.05 m ³ / min]
MAX WORKING PRESSURE	200psi [1379 kPa]
MAX CONTINUOUS RUN TIME	30 min
MAX CURRENT	23 A

ELECTRICAL MOTOR DATA

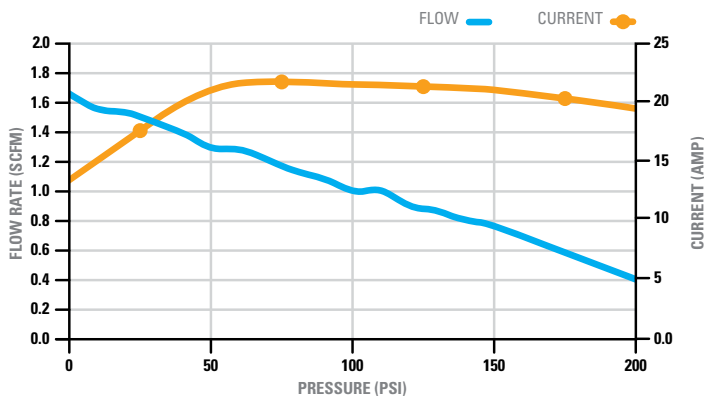
OPERATING VOLTAGE	12 VDC ± 15%
NOMINAL POWER	.25 hp [0.18 kW]
NOMINAL VOLTAGE	12 VDC

**Operating life may be dependent on application*

HP425 12 VDC TANK FILL TIME

TANK SIZE	TANK PART #	0 to 100 psi	100 to 150 psi
½ Gallon	HP10053	24 seconds	21 seconds
2½ Gallon	HP10050	135 seconds	110 seconds
5 Gallon	HP10094	255 seconds	230 seconds

HP425 12 VDC - CURRENT AND FLOW RATE VS. PRESSURE (13.8 VDC)



AIR SUSPENSION

AIR SPRING CONTROLS

ONBOARD AIR

COMPONENTS

WARRANTY

Compressor Specifications

HP625 SERIES AMP AIR COMPRESSORS

Pacbrake's heavy duty HP625 series air compressors have a 100% duty cycle (1 hour @ 100 psi) and are offered in two pump head configurations: vertical and horizontal. These 3/4 horsepower compressors utilize an oil-less design, sealed bearings, a PTFE piston ring, a copper wire wound permanent magnet motor and a cast steel cylinder with a hard anodized aluminum sleeve. The HP625 series compressors require an unloader assembly when used with an air tank:

- HP10116 (12 VDC compressor)
- HP10116-24 (24 VDC compressor)

HP625 series heavy duty air compressors are designed with a cotton air intake filter located below the cylinder head. This type of filtration is acceptable when the compressor is mounted in an area free from moisture and subjected to minimal airborne debris.

Pacbrake's optional remote air intake kit (HP10115) is designed for compressor installations with significant exposure to the elements.

- Vertical (12 VDC & 24 VDC) or Horizontal (12VDC) head configuration
- Sealed bearings
- Cast steel cylinder with hard anodized aluminum sleeve
- PTFE piston ring
- Mountable in any orientation



HP10625V: Gunmetal Gray
HP10625V-B: Matte Black
12 VDC AIR COMPRESSOR (VERTICAL)

Duty Cycle: 100% (1 Hour @ 100 psi)
Max Working Pressure: 150 psi [1034 kPa]
Voltage: 12 VDC
Size: 11.5" x 6" x 9.5" (LxWxH)
 [293 mm x 153 mm x 242 mm]
Weight: 18.5 lbs [8.39 kg]



HP10625H: Gunmetal Gray
HP10625H-B: Matte Black
12 VDC AIR COMPRESSOR (HORIZONTAL)

Duty Cycle: 100% (1 Hour @ 100 psi)
Max Working Pressure: 150 psi [1034 kPa]
Voltage: 12 VDC
Size: 11.5" x 9.5" x 6" (LxWxH)
 [293 mm x 242 mm x 153 mm]
Weight: 18.5 lbs [8.39 kg]



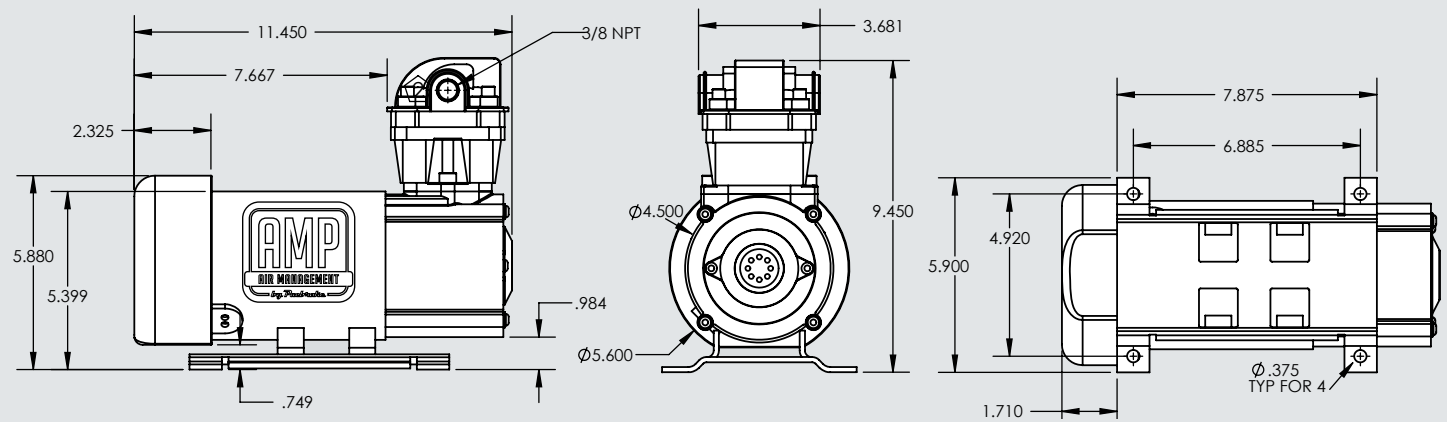
HP10625V-24: Gunmetal Gray
HP10625V-24B: Matte Black
24 VDC AIR COMPRESSOR (VERTICAL)

Duty Cycle: 100% (1 Hour @ 100 psi)
Max Working Pressure: 150 psi [1034 kPa]
Voltage: 24 VDC
Size: 11.5" x 6" x 9.5" (LxWxH)
 [293 mm x 153 mm x 242 mm]
Weight: 18.5 lbs [8.39 kg]

12 VDC TANK FILL TIME			
TANK SIZE	TANK PART #	0 to 100 psi	100 to 150 psi
1/2 Gallon	HP10053	12 seconds	8 seconds
2 1/2 Gallon	HP10050	60 seconds	46 seconds
5 Gallon	HP10094	156 seconds	127 seconds

24 VDC TANK FILL TIME			
TANK SIZE	TANK PART #	0 to 100 psi	100 to 150 psi
1/2 Gallon	HP10053	11 seconds	9 seconds
2 1/2 Gallon	HP10050	55 seconds	46 seconds
5 Gallon	HP10094	127 seconds	110 seconds

HP625 SERIES VERTICAL AIR COMPRESSOR (AVAILABLE IN 12 VDC & 24 VDC) DIMENSIONS (IN INCHES)



AIR SUSPENSION

AIR SPRING CONTROLS

ONBOARD AIR

COMPONENTS

WARRANTY

12 VDC SPECIFICATIONS

GENERAL DATA

PART NUMBER	HP10625V (Vertical), HP10625H (Horizontal)
WEIGHT	18.5 lbs [8.39 kg]
AMBIENT TEMPERATURE RANGE	-22°F to 158°F [-30°C to 70°C]
MAX DUTY CYCLE	100% (1 hour @ 100 psi)
INGRESS PROTECTION	IP52 (IP55 w/remote intake)

PNEUMATIC DATA

RATED FLOW	3.4 SCFM
MAX WORKING PRESSURE	150 psi [1034 kPa]
MAX RESTART PRESSURE	5 psi [35 kPa]

ELECTRICAL MOTOR DATA

MOTOR TYPE	Permanent magnet DC
OPERATING VOLTAGE	12 VDC ± 15%
MAXIMUM CURRENT DRAW	42 A
NOMINAL POWER	¾ HP
NOMINAL SPEED	3000 RPM

*Operating life may be dependent on application

24 VDC SPECIFICATIONS

GENERAL DATA

PART NUMBER	HP10625V-24 (Vertical)
WEIGHT	18.5 lbs [8.39 kg]
AMBIENT TEMPERATURE RANGE	-22°F to 158°F [-30°C to 70°C]
MAX DUTY CYCLE	100% (1 hour @ 100 psi)
INGRESS PROTECTION	IP52 (IP55 w/remote intake)

PNEUMATIC DATA

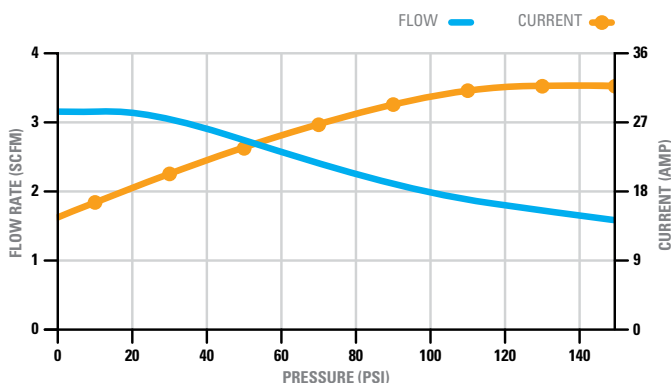
RATED FLOW	3.4 SCFM
MAX WORKING PRESSURE	150 psi [1034 kPa]
MAX RESTART PRESSURE	5 psi [35 kPa]

ELECTRICAL MOTOR DATA

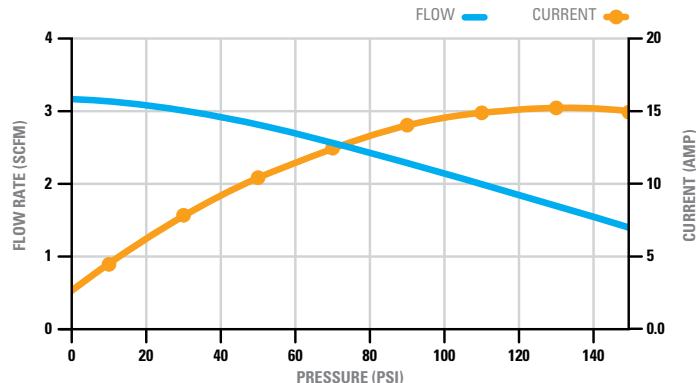
MOTOR TYPE	Permanent magnet DC
OPERATING VOLTAGE	24 VDC ± 15%
MAXIMUM CURRENT DRAW	21 A
NOMINAL POWER	¾ HP
NOMINAL SPEED	3000 RPM

*Operating life may be dependent on application

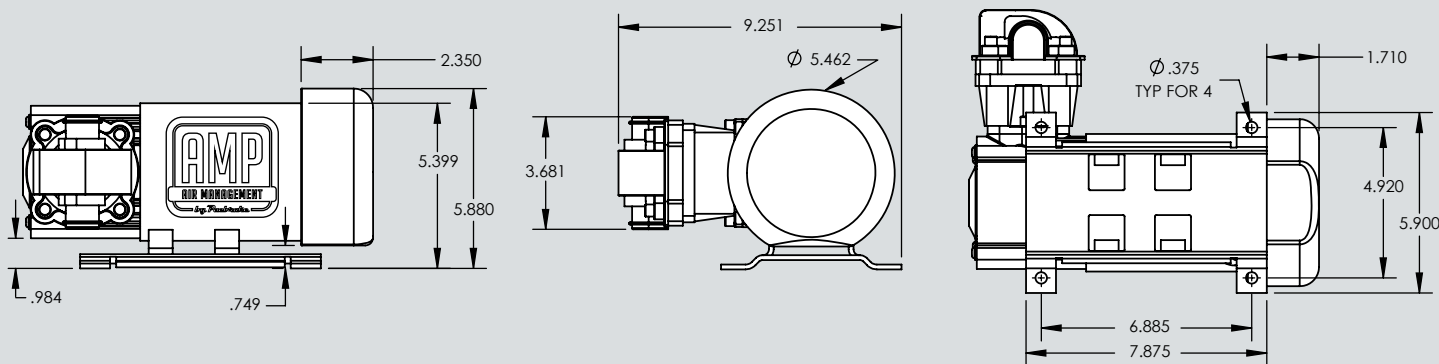
HP625 12 VDC - CURRENT & FLOW RATE VS PRESSURE (13.8 VDC)



HP625 24 VDC - CURRENT AND FLOW RATE VS. PRESSURE (27.6 VDC)



HP625 SERIES HORIZONTAL AIR COMPRESSOR (AVAILABLE IN 12 VDC ONLY) DIMENSIONS (IN INCHES)



Air Tank Specifications



STEEL AIR TANKS

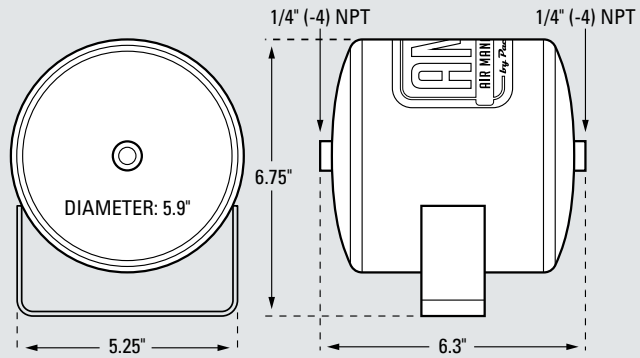
Air tanks work in conjunction with an air compressor to store compressed air and hold it until needed. Storing air allows for quicker product activation and is especially valuable when operating more than one product. These air tanks have welded on mounting brackets. AMP steel air tanks are powder coated, have an anti-rust inhibitor applied internally and meet ASME specifications.

1/2 GALLON AIR TANK

- Welded on mounting brackets
- Anti-rust coating
- 2 x 1/4" (-4) NPT Ports



C11940
1/2 GALLON AIR TANK
 Weight: 3.8 lbs [1.72 kg]
 Max Working Pressure: 150 psi [1034 kPa]
 Burst Pressure: 600 psi [4137 kPa]
 Working Temperature: -40°F to 248°F
 [-40°C to 120°C]

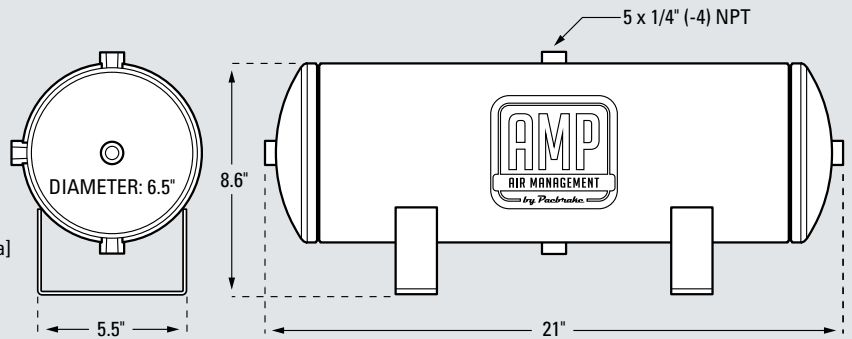


2 1/2 GALLON AIR TANK

- Welded on mounting brackets
- Anti-rust coating
- 5 x 1/4" (-4) NPT Ports



HP10013
2 1/2 GALLON AIR TANK
 Weight: 9.8 lbs [4.45 kg]
 Max Working Pressure: 150 psi [1034 kPa]
 Burst Pressure: 600 psi [4137 kPa]
 Working Temperature: -40°F to 248°F
 [-40°C to 120°C]

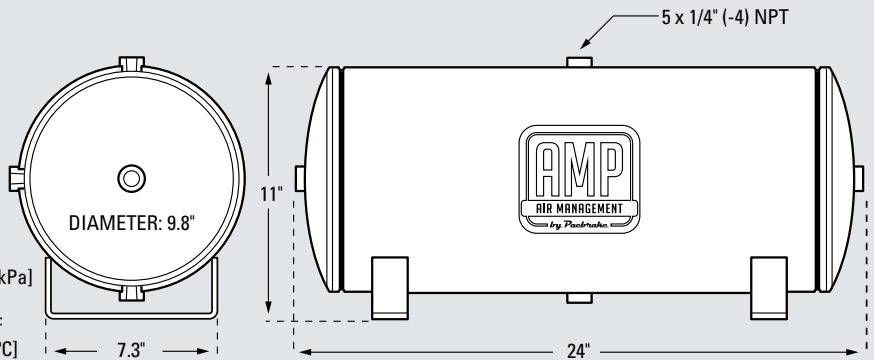


5 GALLON AIR TANK

- Welded on mounting brackets
- Anti-rust coating
- 5 x 1/4" (-4) NPT



HP10014
5 GALLON AIR TANK
 Weight: 17.8 lbs [8.07 kg]
 Max Working Pressure: 150 psi [1034 kPa]
 Burst Pressure: 600 psi [4137 kPa]
 Working Temperature: -40°F to 248°F
 [-40°C to 120°C]



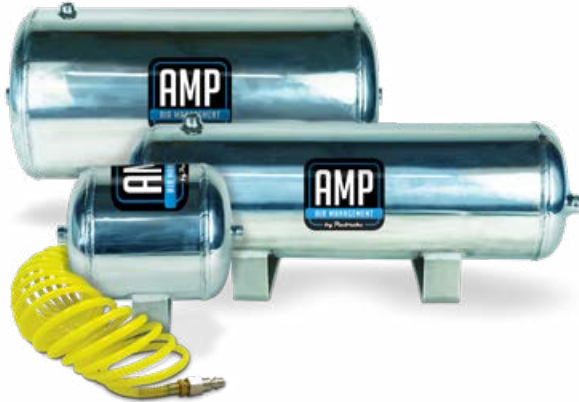
AIR SUSPENSION

AIR SPRING CONTROLS

ONBOARD AIR

COMPONENTS

WARRANTY



ALUMINUM AIR TANKS

Aluminum tanks are made with less corrosive and lighter material than the standard steel tanks. These tanks also work in conjunction with air compressors to store the compressed air and hold it until it is required. This allows for quicker activation, especially when operating more than one product simultaneously. Pacbrake offers three air tank sizes: a 1/2 gallon tank, a 2 1/2 gallon tank and a 5 gallon tank.

AIR SUSPENSION

AIR SPRING CONTROLS

ONBOARD AIR

COMPONENTS

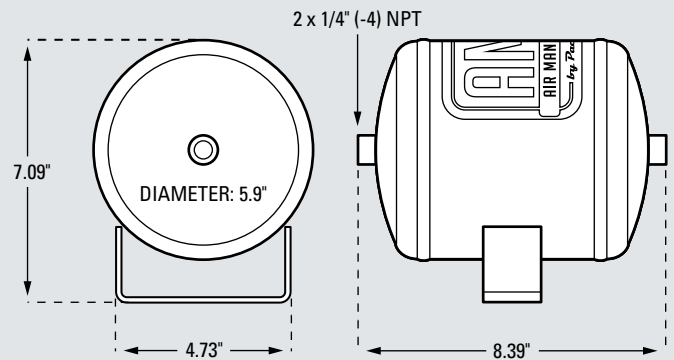
WARRANTY

1/2 GALLON AIR TANK

- Welded on mounting brackets
- Polished aluminum
- 2 x 1/4" (-4) NPT Ports



HP10257
1/2 GALLON AIR TANK
 Weight: 1.98 lbs [0.9 kg]
 Wall Thickness: .1" [2.5 mm]
 Max Working Pressure: 200 psi [1380 kPa]
 Burst Pressure: 600 psi [4137 kPa]
 Working Temperature: -40°F to 248°F
 [-40°C to 120°C]

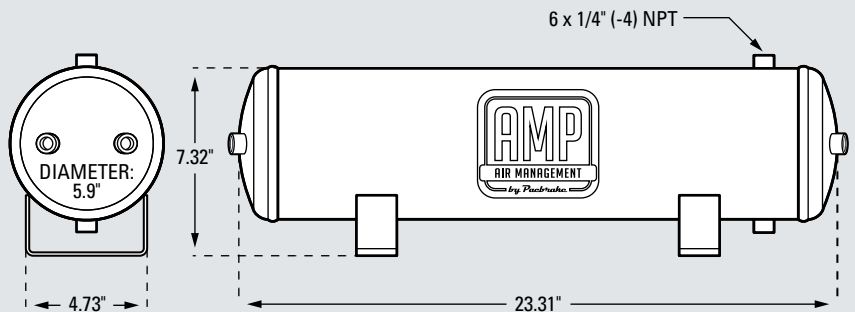


2 1/2 GALLON AIR TANK

- Welded on mounting brackets
- Polished aluminum
- 6 x 1/4" (-4) NPT Ports



HP10258
2 1/2 GALLON AIR TANK
 Weight: 4.9 lbs [2.2 kg]
 Wall Thickness: .1" [2.5 mm]
 Max Working Pressure: 200 psi [1380 kPa]
 Burst Pressure: 600 psi [4137 kPa]
 Working Temperature: -40°F to 248°F
 [-40°C to 120°C]

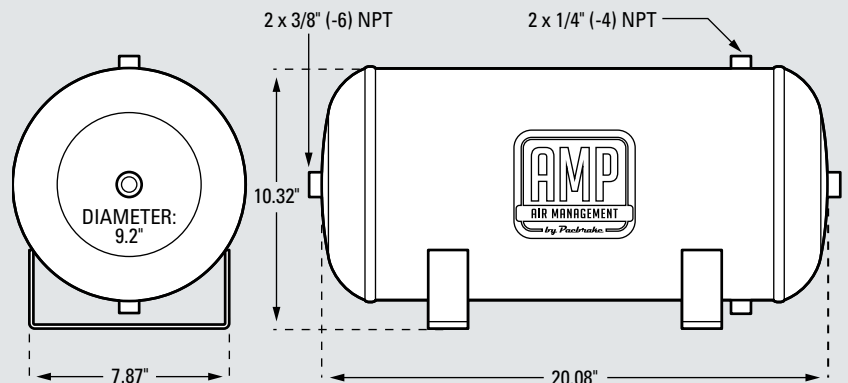


5 GALLON AIR TANK

- Welded on mounting brackets
- Polished aluminum
- 2 x 3/8" (-6) NPT Ports and 2 x 1/4" (-4) NPT Ports



HP10259
5 GALLON AIR TANK
 Weight: 7.94 lbs [3.6 kg]
 Wall Thickness: .12" [2.9 mm]
 Max Working Pressure: 200 psi [1380 kPa]
 Burst Pressure: 600 psi [4137 kPa]
 Working Temperature: -40°F to 248°F
 [-40°C to 120°C]





MARKETING MATERIALS

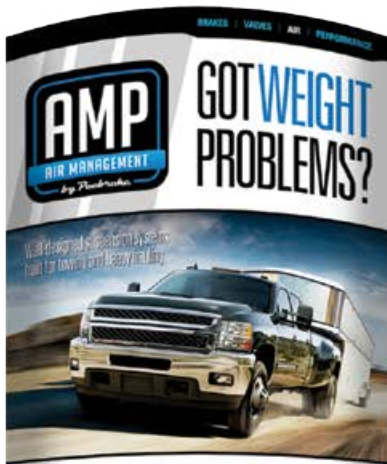
BANNERS, COUNTER DISPLAYS, POSTERS, BROCHURES & MORE

ORDER AMP MARKETING MATERIAL ON OUR DEALER WEBSITE TODAY

It has never been easier to sell AMP products thanks to our various display and literature options. Whether you've run out of brochures for an existing display or need new marketing materials to help with your sales efforts, we've made it fast and easy for you to get the tools you need:

1. Login to pacbrake.com/dealer-info
2. Click **MARKETING MATERIALS** on the left hand side
3. Select whether you need **NEW** or **REPLACEMENT** materials
4. Complete the online form and you're done!

If you have any questions about our marketing material contact us at marketing@pacbrake.com



PUSH-TO-CONNECT FITTINGS

- For use with air, water and oil
- DOT fittings are approved for automotive air brake systems using DOT approved nylon tube
- Non-DOT fittings are for use with standard nylon tube or DOT approved
- Require the use of teflon® tape or pipe sealant – some fittings may come with pipe sealant pre-applied

SPECIFICATIONS		
DOT:	MAXIMUM WORKING PRESSURE	¼" OD Tube: 300 psi [2.07 mPa]
	WORKING TEMPERATURE RANGE:	-40°F to 200°F [40°C to 93°C]
NON-DOT:	MAXIMUM WORKING PRESSURE	½" OD Tube: 350 psi [2.41 mPa]
	MAXIMUM WORKING PRESSURE	¾" OD Tube: 250 psi [1.72 mPa]
	MAXIMUM WORKING PRESSURE	¾" OD Tube: 300 psi [2.07 mPa]
	WORKING TEMPERATURE RANGE	-10°F to 200°F [23°C to 93°C]



HP1152
FEMALE PIPE BULKHEAD
Material: Brass
Fitting End A: 1/4" OD Tube
Fitting End B: 1/4" (-4) NPT Female
NON-DOT



HP1210
FEMALE PIPE CONNECTOR
Material: Nickel Plated Brass
Fitting End A: 1/4" OD Tube
Fitting End B: 1/8" (-2) NPT Female
NON-DOT



HP1245
MALE PIPE 90° ELBOW
Material: Brass
Fitting End A: 1/4" OD Tube
Fitting End B: 3/8" (-6) NPT Male
(Pre-Applied Sealant)
NON-DOT



HP1100
MALE PIPE 90° SWIVEL ELBOW
Material: Nickel Plated Brass
Fitting End A: 1/4" OD Tube
Fitting End B: 1/4" (-4) NPT Male
NON-DOT



HP1019
MALE PIPE 90° SWIVEL ELBOW
Material: Nickel Plated Brass
Fitting End A: 1/4" OD Tube
Fitting End B: 1/8" (-2) NPT Male
(Pre-Applied Sealant)
NON-DOT



HP1122
MALE PIPE 90° SWIVEL ELBOW
Material: Brass
Fitting End A: 1/8" OD Tube
Fitting End B: 1/8" (-2) NPT Male
(Pre-Applied Sealant)
NON-DOT



HP1098
MALE PIPE CONNECTOR
Material: Nickel Plated Brass
Fitting End A: 1/4" OD Tube
Fitting End B: 1/8" (-2) NPT Male
NON-DOT



HP1099
MALE PIPE CONNECTOR
Material: Brass
Fitting End A: 1/4" OD Tube
Fitting End B: 1/4" (-4) NPT Male
(Pre-Applied Sealant)
NON-DOT



HP1214
MALE PIPE CONNECTOR
Material: Brass
Fitting End A: 3/8" OD Tube
Fitting End B: 1/4" (-4) NPT Male
(Pre-Applied Sealant)
NON-DOT



HP1385
MALE PIPE CONNECTOR
Material: Brass
Fitting End A: 1/4" OD Tube
Fitting End B: 3/8" (-6) NPT Male
(Pre-Applied Sealant)
DOT



HP1176
UNION TEE
Material: Brass
Fitting End A: 1/4" OD Tube
Fitting End B: 1/4" OD Tube
Fitting End C: 1/4" OD Tube
DOT

HOSE BARB FITTINGS

- General purpose fittings for air, water, low pressure and vacuum applications
- Tube/hose requires securing with clamps or ferrules
- Require the use of teflon® tape or pipe sealant – some fittings may come with pipe sealant pre-applied

SPECIFICATIONS	
MAXIMUM WORKING PRESSURE	Dependent on tube/hose
WORKING TEMPERATURE RANGE:	-40°F to 220°F [40°C to 104°C]



C11868
MALE PIPE 90° ELBOW
Material: Brass
Fitting End A: 1/4" ID Tube
Fitting End B: 1/8" (-2) NPT Male



C10686
MALE PIPE CONNECTOR
Material: Brass
Fitting End A: 1/8" ID Tube
Fitting End B: 10/32" UNF Male



C11867
MALE PIPE CONNECTOR
Material: Brass
Fitting End A: 1/4" ID Tube
Fitting End B: 1/8" (-2) NPT Male



C10568
MALE PIPE CONNECTOR
Material: Brass
Fitting End A: 1/8" ID Tube
Fitting End B: 1/8" (-2) NPT Male



C11833
MALE PIPE CONNECTOR
Material: Brass
Fitting End A: 3/8" ID Tube
Fitting End B: 1/8" (-2) NPT Male



C10501
UNION TEE
Material: Brass
Fitting End A: 0.170" ID Tube
Fitting End B: 0.170" ID Tube

Pneumatic & Hydraulic Fittings

PIPE FITTINGS

- General purpose fittings for use with air, natural gas, water and oil
- Require the use of teflon® tape or pipe sealant – some fittings may come with pipe sealant pre-applied

SPECIFICATIONS	
MAXIMUM WORKING PRESSURE	5,000 psi [34.5 mPa]
WORKING TEMPERATURE RANGE:	-65°F to 250°F [-54°C to 120°C]



C20092
90° STREET ELBOW
Material: Brass
Fitting End A: 1/8" (-2) NPT Male
Fitting End B: 1/8" (-2) NPT Female



HP1096
BUSHING
Material: Brass
Fitting End A: 1/4" (-4) NPT Male
Fitting End B: 1/8" (-2) NPT Female



C11722
MALE HEX NIPPLE
Material: Brass
Fitting End A: 1/8" (-2) NPT Male
Fitting End B: 1/8" (-2) NPT Male



HP1171
90° STREET ELBOW
Material: Brass
Fitting End A: 1/4" (-4) NPT Male
Fitting End B: 1/4" (-4) NPT Female



C3086
HEX HEAD PLUG
Material: Brass
Fitting End A: 1/8" (-2) NPT Male



HP1153
CLOSE NIPPLE
Material: Brass
Fitting End A: 1/4" (-4) NPT Male
Fitting End B: 1/4" (-4) NPT Male



HP1387
90° STREET ELBOW
Material: Brass
Fitting End A: 3/8" (-6) NPT Male
Fitting End B: 3/8" (-6) NPT Female



C10575
HEX NIPPLE
Material: Steel
Fitting End A: 1/4" (-4) NPT Male
Fitting End B: 1/8" (-2) NPT Male



HP1386
PLUG
Material: Zinc Plated Steel
Fitting End A: 3/8" (-6) NPT Male



HP1388
BUSHING
Material: Brass
Fitting End A: 3/8" (-6) NPT Male
Fitting End B: 1/4" (-4) NPT Female



C10583
HEX NIPPLE
Material: Steel
Fitting End A: 1/8" (-2) NPT Male
Fitting End B: 1/8" (-2) NPT Male



C10567
STREET TEE
Material: Brass
Fitting End A: 1/8" (-2) NPT Female
Fitting End B: 1/8" (-2) NPT Female
Fitting End C: 1/8" (-2) NPT Male



HP1238
BUSHING
Material: Brass
Fitting End A: 3/4" (-12) NPT Male
Fitting End B: 3/8" (-6) NPT Female



C18008
CROSS
Material: Brass
Fitting End A: 1/8" (-2) NPT Female
Fitting End B: 1/8" (-2) NPT Female
Fitting End C: 1/8" (-2) NPT Female
Fitting End D: 1/8" (-2) NPT Female



C11737
TEE
Material: Brass
Fitting End A: 1/8" (-2) NPT Female
Fitting End B: 1/8" (-2) NPT Female
Fitting End C: 1/8" (-2) NPT Female

SAE 45° FLARE FITTINGS

- Incompatible with JIC (SAE 37°)
- For use with air, natural gas, water, oil, refrigerant & gasoline

SPECIFICATIONS	
MAXIMUM WORKING PRESSURE	1/4" (-4) SAE 45°: 1,400 psi [9.65 MPa]
WORKING TEMPERATURE RANGE:	-65°F to 250°F [-54°C to 120°C]



C10680
MALE PIPE 90° ELBOW
Material: Brass
Fitting End A: 1/4" (-4) SAE 45° Male
Fitting End B: 1/8" (-2) NPT Male



C10770
MALE PIPE CONNECTOR
Material: Brass
Fitting End A: 1/4" (-4) SAE 45° Male
Fitting End B: 1/4" (-4) NPT Male



C11786
MALE PIPE CONNECTOR
Material: Brass
Fitting End A: 1/4" (-4) SAE 45° Male
Fitting End B: 1/8" (-2) NPT Male



C10685
MALE PIPE 45° ELBOW
Material: Brass
Fitting End A: 1/4" (-4) SAE 45° Male
Fitting End B: 1/8" (-2) NPT Male

AIR SUSPENSION

AIR SPRING CONTROLS

ONBOARD AIR

COMPONENTS

WARRANTY

COMPRESSION FITTINGS

- For use with air, water and oil
- DOT fittings are approved for automotive air brake systems
- Require the use of teflon® tape or pipe sealant – some fittings may come with pipe sealant pre-applied

SPECIFICATIONS		
DOT:	MAXIMUM WORKING PRESSURE	¼" OD Tube: 300 psi [2.07 MPa]
	WORKING TEMPERATURE RANGE:	-40°F to 200°F [-40°C to 93°C]
NON-DOT:	MAXIMUM WORKING PRESSURE	½" OD Tube: 400 psi [2.76 MPa]
	MAXIMUM WORKING PRESSURE	¾" OD Tube: 200 psi [1.38 MPa]
	WORKING TEMPERATURE RANGE	-65°F to 250°F [-54°C to 120°C]



HP1151
FEMALE PIPE CONNECTOR
Material: Brass
Fitting End A: ¼" OD Tube Nylon
Fitting End B: ¼" (-4) NPT Female DOT



C11796
MALE PIPE 90° ELBOW
Material: Brass
Fitting End A: ¼" OD Tube Nylon
Fitting End B: 1/8" (-2) NPT Male DOT



C10576
MALE PIPE CONNECTOR
Material: Brass
Fitting End A: ¼" OD Tube Nylon
Fitting End B: ¼" (-4) NPT Male DOT



HP1120
FEMALE PIPE CONNECTOR
Material: Brass
Fitting End A: 1/8" OD Tube Nylon
Fitting End B: 1/8" (-2) NPT Female NON-DOT



HP1236
MALE PIPE 90° ELBOW
Material: Brass
Fitting End A: 3/8" OD Tube Brass/Copper/Aluminum
Fitting End B: 3/8" (-6) NPT Male NON-DOT



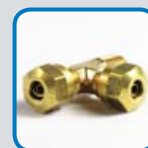
C10570
MALE PIPE CONNECTOR
Material: Brass
Fitting End A: ¼" OD Tube Nylon
Fitting End B: 1/8" (-2) NPT Male DOT



C10591
MALE PIPE 45° ELBOW
Material: Brass
Fitting End A: ¼" OD Tube Nylon
Fitting End B: 1/8" (-2) NPT Male DOT



C10572
MALE PIPE CONNECTOR
Material: Brass
Fitting End A: ¼" OD Tube Nylon
Fitting End B: ¼" (-4) NPT Male DOT



C11795
MALE PIPE RUN TEE
Material: Brass
Fitting End A: ¼" OD Tube Nylon
Fitting End B: ¼" OD Tube Nylon
Fitting End C: 1/8" (-2) NPT Male DOT

JIC (SAE 37°) FLARE FITTINGS

- JIC (Joint Industrial Council) also known as SAE 37° meeting SAE J514 – incompatible with SAE 45°
- For use with air, natural gas, water, oil, refrigerant & gasoline
- NPT compatible with NPTF when Teflon® tape or thread sealant is utilized

SPECIFICATIONS		
MAXIMUM WORKING PRESSURE	¼" (-4) JIC:	-28" Hg to 5,000 psi [-0.94 kPa to 9.65 MPa]
WORKING TEMPERATURE RANGE:		-60°F to 400°F [-54°C to 204°C]



C3467
MALE PIPE CONNECTOR
Material: Steel
Fitting End A: ¼" (-4) JIC Male
Fitting End B: 1/8" (-2) NPTF Male



C3468
90° ELBOW
Material: Steel
Fitting End A: ¼" (-4) JIC Male
Fitting End B: 1/8" (-2) NPTF Male

ISO 6149 FITTINGS

- For use in hydraulic power applications
- NPT compatible with NPTF when Teflon® tape or thread sealant is utilized



P55116
FEMALE PIPE CONNECTOR
Material: Brass Body, FKM Seal
Fitting End A: M14 X 1.5 ISO 6149-3 Male
Fitting End B: 1/8" (-2) NPTF Female

SPECIFICATIONS	
MAXIMUM WORKING PRESSURE	0 psi to 1000 psi [0 mPa to 6.9 mPa]
WORKING TEMPERATURE RANGE:	-65°F to 250°F [-54°C to 121°C]

PNEUMATIC ACCESSORIES

Effective for muffling air valve noise, filtering exhaust/intake air & pressure/vacuum equalization



C10774
POROUS BRONZE AIR SILENCER
Material: Bronze/Steel
Fitting End A: 1/8" (-2) NPTF Male
Max Rated: 5 SCFM @ 90 psi



C10833
POROUS BRONZE AIR SILENCER
Material: Bronze
Fitting End A: 10-32 UNF Male
Filtration: 40 µm
Max Rated: 2 CFM @ 90 psi

Pneumatic & Hydraulic Fittings

CHECK VALVES

- Pneumatic Operation
- Zero Reverse Leakage
- Corrosion Proof (Brass or Stainless Steel)

SPECIFICATIONS	
MAXIMUM WORKING PRESSURE	150 psi [1.03 MPa]
WORKING TEMPERATURE RANGE:	-40°F to 248°F [-40° to 120° C]
MINIMUM FLOW RATE	3.5 SCFM at 5 psi [0.03 MPa]
MAXIMUM CRACKING PRESSURE	5 psi [0.03 MPa]



C20506
Material: Stainless Steel
External Hex: Standard Size
Inlet: 1/8" (-2) NPT Male
Outlet: 1/8" (-2) NPT Female



C20512
Material: Brass
External Hex: Standard Size
Inlet: 1/4" (-4) NPT Male
Outlet: 1/4" (-4) NPT Male

QUICK EXHAUST VALVES (QEV)

When installed directly onto pneumatic cylinders, a QEV will allow for quick pneumatic cylinder retraction times, by allowing the compressed air within the pneumatic cylinder to vent directly to atmosphere through the QEV, rather than be pushed back through a length of plumbing back to the activation solenoid.

SPECIFICATIONS	
PRESSURE RANGE	3.9 psi to 145 psi [26.9 kPa to 1,000 kPa]
WORKING TEMPERATURE RANGE:	-40°F to 165°F [-40°C to 74°C]



C10555
QUICK EXHAUST VALVES
Fitting End A: 1/8" (-2) NPT Female
Fitting End B: 1/8" (-2) NPT Female
Fitting End C: 1/8" (-2) NPT Female



C10580
QUICK EXHAUST VALVE
Fitting End A: 1/4" NPT (-4) Female
Fitting End B: 1/4" NPT (-4) Female
Fitting End C: 1/4" NPT (-4) Female

SAE 100R5 END FITTINGS

- Steel reusable end fittings for sae 100R5 (non skive) hose

SPECIFICATIONS	
MAXIMUM WORKING PRESSURE	Hose size dependent
WORKING TEMPERATURE RANGE:	-40°F to 250°F [-40°C to 121°C]



C11041
SAE 100R5 END FITTINGS
Material: Steel
Fitting End A: 1/4" Nominal ID Hose
Fitting End B: 1/8" (-2) NPT Male



C11042
SAE 100R5 END FITTINGS
Material: Steel
Fitting End A: 1/4" Nominal ID Hose
Fitting End B: 1/4" (-4) NPT Male



C11043
SAE 100R5 END FITTINGS
Material: Steel
Fitting End A: 1/4" Nominal ID Hose
Fitting End B: 1/4" (-4) SAE 45° Female

SAE 100R5 MEDIUM PRESSURE HYDRAULIC HOSE (HR5)

For medium pressure hydraulic service in the handling of most hydraulic fluids, gasoline, diesel fuels, lubricating oils, air and water. Recommended for power steering and power steering return lines, fuel filters, turbochargers, tilt lines, lube oil lines and machine tools. Not suitable for use with phosphate esters. Cover is not removed. Meets DOT FMVSS – 106 (Non skive).

- Constructed with a textile inner braid with a single wire braid reinforcement & a cotton braided black cover
- Oil and heat-resistant synthetic rubber inner tube
- For fittings CW500 Crimp/SR500 (series) Reusable



C10107
SAE 100R5 MEDIUM PRESSURE HYDRAULIC HOSE
Radius: 1/4" (-4) Nominal ID Hose
Actual ID: 3/16" [4.76 mm]
Hose OD: .52" [13.21 mm]

SPECIFICATIONS	
WORKING PRESSURE	3000 psi [20.68 MPa]
TEMPERATURE RANGE:	-40°F to 250°F [-40°C to 121°C]
MINIMUM BURST PRESSURE	12,000 psi [82.73 MPa]
MINIMUM BEND RADIUS	3' [76.2 mm]



NYLON TUBING

Nylon is strong and has a very high pressure rating making it ideal for pneumatic applications. Its strength allows it to be manufactured with thin walls while still maintaining a high pressure ratings. Nylon is also stable when exposed to light and heat sources. The combination of high pressure rating, high flow rate, flexibility, and strength make it the perfect choice for the Pacbrake AMP system.

AIRLINE TUBING

- DOT tubing is approved for automotive air brake systems

AIRLINE TUBING (NYLON)					
COLOR	SIZE	LENGTH	PART #	STANDARD	DOT
Black	1/8"	20' [6.10 m]	HP1123-20	SAE J844	X
Black	1/8"	30' [9.14 m]	HP1123-30	SAE J844	X
Black	1/8"	40' [12.19 m]	HP1123-40	SAE J844	X
Black	1/8"	50' [15.24 m]	HP1123-50	SAE J844	X
Black	1/4"	20' [6.10 m]	M8280-20	N/A	X
Black	1/4"	30' [9.14 m]	M8280-30	N/A	X
Black	1/4"	40' [12.19 m]	M8280-40	N/A	X
Black	1/4"	50' [15.24 m]	M8280-50	N/A	X
Black	3/8"	20' [6.10 m]	HP1215-20	SAE J844	✓
Black	3/8"	30' [9.14 m]	HP1215-30	SAE J844	✓
Black	3/8"	40' [12.19 m]	HP1215-40	SAE J844	✓
Black	3/8"	50' [15.24 m]	HP1215-50	SAE J844	✓
Red	1/4"	20' [6.10 m]	M8675-20	SAE J844	✓
Red	1/4"	30' [9.14 m]	M8675-30	SAE J844	✓
Red	1/4"	40' [12.19 m]	M8675-40	SAE J844	✓
Red	1/4"	50' [15.24 m]	M8675-50	SAE J844	✓
Blue	1/4"	20' [6.10 m]	M8685-20	SAE J844	✓
Blue	1/4"	30' [9.14 m]	M8685-30	SAE J844	✓
Blue	1/4"	40' [12.19 m]	M8685-40	SAE J844	✓
Blue	1/4"	50' [15.24 m]	M8685-50	SAE J844	✓
Green	1/4"	20' [6.10 m]	M8676-20	SAE J844	✓
Green	1/4"	30' [9.14 m]	M8676-30	SAE J844	✓
Green	1/4"	40' [12.19 m]	M8676-40	SAE J844	✓
Green	1/4"	50' [15.24 m]	M8676-50	SAE J844	✓
Yellow	6 mm	20' [6.10 m]	M8299-20	N/A	X
Yellow	6 mm	30' [9.14 m]	M8299-30	N/A	X
Yellow	6 mm	40' [12.19 m]	M8299-40	N/A	X
Yellow	6 mm	50' [15.24 m]	M8299-50	N/A	X



HP1123

M8280

HP1215

M8675

M8685

M8676

M8299



AIR SUSPENSION

AIR SPRING CONTROLS

ONBOARD AIR

COMPONENTS

WARRANTY



FREQUENTLY ASKED QUESTIONS

IF I HAVE UNEVEN WEIGHT DISTRIBUTION, IS IT EASY TO CUSTOMIZE THE AMOUNT OF AIR IN EACH SPRING?

Yes. Whether you have manual fill valves or in-cab controls with onboard air, you can easily adjust each air spring's pressure to level out your vehicle. The manual fill valves are installed so that the fill valves are easily accessible, usually positioned out of the license plate at the rear of the vehicle. In-cab controls (with onboard air) allow you to adjust each air spring's pressure from the comfort of your driver's seat.

DO AIR SPRINGS REPLACE MY EXISTING SUSPENSION?

No, the air springs are an addition to your existing suspension, not a substitution. Kits are easily installed and do not affect your vehicle's factory suspension.

IF I CHOOSE TO INSTALL THE AMP AIR SUSPENSION KIT, CAN I INCREASE MY MAXIMUM LOAD CAPACITY?

No. You must never exceed your GVWR (Gross Vehicle Weight Rating). The air springs simply provide you with added support and therefore better control for an overall smoother, safer ride.

WILL THE INSTALLATION TAKE A LONG TIME TO COMPLETE?

No. The installation is fairly simple and can usually be completed within 2-3 hours. If installing the kit with an onboard air system, the installation procedure is a little different and may vary depending on the vehicle application.

IMPORTANT:

An air suspension kit will not increase the GVWR (Gross Vehicle Weight Rating), as the GVWR is determined by the axle rating. Do not exceed the maximum capacity listed by the vehicle manufacturer.

BEFORE YOU START:

NOTE: Some vehicles are equipped with a rear wheel brake proportioning valve. Check with the manufacturer before installing the air spring kit, as it may affect braking performance.

1. Ensure the application information is correct for the make, model and year of the vehicle you are installing the kit on.
2. Pacbrake recommends using a good quality anti-seize on all fasteners. This will reduce the chance of corrosion on the fasteners and will help facilitate removal, if required at a later date.

Warranty

Pacbrake's AMP Air Spring & Air Management Limited Warranty

This Pacbrake warranty applies to all AMP Air Spring and Air Management Systems listed below.

This warranty is non-transferable to next vehicle owner or another vehicle. The Air Spring and Air Management Systems are products of Pacbrake Company and are warranted to be free of defects in construction and operation under normal use and service for the Warranty Coverage periods set forth. There are no representations or warranties, which extend beyond the terms hereof.

THERE ARE NO OTHER WARRANTIES, EXPRESSED OR IMPLIED, INCLUDING NO WARRANTY OF MERCHANTABILITY AND NO WARRANTY OF FITNESS FOR A PARTICULAR PURPOSE.

PRODUCT WARRANTED

Warranty Coverage applies to ALL Pacbrake AIR SPRING and AIR MANAGEMENT SYSTEM models.

WARRANTY COVERAGE

Air Springs

- **Lifetime warranty on the original air springs to the original purchaser on the vehicle of first installation**

Convolute Air Springs: Delivered on or after March 1st, 2010.

Sleeve Style Air Springs: Delivered on or after March 1st, 2014.

Polyurethane Air Springs: Delivered on or after March 1st, 2014.

- **Replacement air springs 6 months warranty**

Air Spring Mounting Brackets, Spacers & Fasteners:

- Two (2) years or 24,000 miles (38,000 kms), whichever shall occur first*.

Air Management Control Components including

Air Compressors, Switches, Solenoids, Gauges, Air Tanks:

- Two (2) years or 24,000 miles (38,000 kms), whichever shall occur first*.

O-Rings, Fittings, Hoses and Accessories:

- One (1) year or 12,000 miles (19,000 kms), whichever shall occur first*.

*Component failure as a result of corrosion is NOT covered by warranty.

Air Spring and Air Management Systems Replacement Component and/or Assemblies Coverage Period:

- Six (6) months unlimited mileage or the remainder of the original warranty, whichever is longer.

Labor Charges:

Labor charges associated with repair or replacement of this product is the sole responsibility of the vehicle owner.

LIMITED WARRANTY

Under these limited warranties, Pacbrake will repair or replace without charge, any part returned to us, freight prepaid, which our examination discloses to our satisfaction to have been defective within the warranty coverage period measured from the date of delivery of the product in question to the original user.

This warranty will not apply to any part or parts which have been altered or repaired, or to parts which have been subjected to misuse, abuse, neglect, off-road, racing ("Racing" is used in its broadest sense and for example, without regard to formalities in relation to prizes, competition, etc.) or accident, or to parts which have been improperly applied, or installed. Improper installation, application, or substitution of parts not manufactured or approved by us shall void this warranty.

PACBRAKE'S SOLE LIABILITY AND YOUR EXCLUSIVE REMEDY IS LIMITED TO THE OBLIGATIONS SET FORTH HEREIN AND PACBRAKE SHALL NOT BE LIABLE FOR ANY SPECIAL, INDIRECT, OR CONSEQUENTIAL DAMAGES.

If the product should become defective within the warranty coverage period an authorized Pacbrake distributor shall be notified by you within ninety (90) days of your having notice of a defect. If a Pacbrake Distributor is unable to correct the problem or if you have any questions regarding this warranty, write to the address shown below and provide full details of the problem including proof of purchase, the model and serial numbers of the product if applicable.

USA: PO Box 1822
Blaine, WA
98231-1822

Canada: 19594 96 Avenue
Surrey, BC
V4N 4C3

PLEASE NOTE: OWNER'S WARRANTY WILL BE VOID IF AIR SPRINGS RUN WITH LESS THAN THE MINIMUM OF 10 PSI. WARRANTY CARD MUST BE COMPLETED & MAILED WITHIN 30 DAYS TO VALIDATE WARRANTY.

Online warranty registration is available at www.pacbrake.com/warranty

PACPRO®

PERFORMANCE PARTS by PACBRAKE



**INCREASED
PERFORMANCE FOR
HARDWORKING TRUCKS**

- » Increase Driving Control
- » Improve Mechanical Suspension
- » Optimize Engine Operation

Learn more about PacPro Performance Parts. Contact Pacbrake to order a PacPro catalogue or go to pacbrake.com/ctl



TIE ROD SLEEVES



LEVELING KITS



AIR HORNS



REMOTE OIL FILTER



MAX FLOW ELBOW



SPRING KITS



SWITCHES

EXHAUST & ENGINE BRAKES

PACBRAKE'S HEAVY DUTY BRAKING FOR HEAVY DUTY HAULING

Tow With *Confidence*
Brake With *Authority*



With today's trucks capable of towing/hauling over 30,000 lbs, additional control & stopping power has never been more necessary. Pacbrake engine and exhaust brakes are unmatched in braking performance.



EXHAUST BRAKES



LOADLEASH



ENGINE BRAKES



REPLACEMENT PARTS



ISO 9001
QMI-SAI Global

Learn more about Pacbrake's Exhaust & Engine Brake product lines. Contact Pacbrake to order a Braking product catalogue or go to pacbrake.com/ctlg





ADJUSTABLE AIR SPRINGS

ADDED SUPPORT FOR AN OVERALL SMOOTHER SAFER RIDE



AMP: THE #1 SOLUTION FOR YOUR TOW/HAUL PROBLEMS

EASY BOLT ON INSTALLATION

LIFETIME WARRANTY



AMP ONBOARD AIR MANAGEMENT SYSTEMS

Air Compressors · Air Tanks · Air Spring Controls

PACBRAKE COMPANY

CUSTOMER SUPPORT

800.663.0096
info@pacbrake.com
www.pacbrake.com/contact

HEAD OFFICE CANADA

19594 96th Avenue
Surrey, BC V4N 4C3

US OFFICE

1670 Grant Avenue
Blaine, WA 98230

MAILING ADDRESS

PO Box 1822
Blaine, WA 98231



Quality air products from a name you trust



PACBRAKE

www.pacbrake.com/AMP



Printed in Canada Rev4-05.03.18 L6389